

Crestline Village Water District Source of Supply Production Report System Loss - Last 13 Months In Cubic Feet

Sources of Supply 25-2026	January	February	March	April	May	June	July	August	September	October	November	December	January	February	Average
Wells	1,329,313	1,408,245	1,588,054	1,555,877	1,641,672	1,952,114	2,075,309	1,940,991	1,748,421	1,715,081	1,663,478	1,469,749	1,500,861	1,479,110	1,708,245
Purchased Water	575,008	435,376	410,467	411,959	370,939	696,887	988,183	777,930	870,070	524,662	466,008	483,526	325,066	405,860	557,908
Adjustment to Wells *	0	0	0	0	0	0	0	0	0	0	0	0	0	0	0
Total Water Supplied	1,904,321	1,843,621	1,998,521	1,967,836	2,012,611	2,649,001	3,063,492	2,718,921	2,618,491	2,239,743	2,129,486	1,953,275	1,825,927	1,884,970	2,223,530

Metered Accounts	January	February	March	April	May	June	July	August	September	October	November	December	January	February	Average
Crestline Area	926,100	928,800	747,700	856,600	900,600	1,103,522	1,197,300	1,351,500	1,315,600	1,124,000	1,102,100	848,000	824,700	841,500	1,010,917
Lake Gregory Area	1,020,800	925,400	823,800	946,600	936,200	1,222,390	1,297,300	1,339,000	1,321,500	1,122,600	1,041,800	929,300	1,023,700	903,200	1,064,061
Change in Storage	43,640	23,133	(29,114)	9,129	(6,290)	342	58,006	(36,938)	16,597	(6,378)	(14,242)	32,680	(40,735)	17,422	1,816
Flushing, System & Other	2,984	2,695	5,164	20,454	20,743	5,804	16,743	13,971	4,007	4,174	17,560	14,483	4,337	3,790	10,302
Accounted for Water	1,993,524	1,880,028	1,547,550	1,832,783	1,851,253	2,332,058	2,569,349	2,667,533	2,657,704	2,244,396	2,147,218	1,824,463	1,812,002	1,765,912	2,087,096

Total Water Supplied - Total Water Sold

	January	February	March	April	May	June	July	August	September	October	November	December	January	February	Average
System Loss (CF)	(89,203)	(36,407)	450,971	135,053	161,358	316,943	494,143	51,388	(39,213)	(4,653)	(17,732)	128,812	13,925	119,058	136,434
System Loss (%)	-4.7%	-2.0%	22.6%	6.9%	8.0%	12.0%	16.1%	1.9%	-1.5%	-0.2%	-0.8%	6.6%	0.8%	6.3%	5.9%
System Loss (GPM)	(14.9)	(6.8)	75.6	23.4	27.9	53.1	82.8	8.6	(6.8)	(0.8)	(3.1)	21.6	2.3	22.1	23.1

Month to Month Averaging

Month to Month Averaging ***	January	February	March	April	May	June	July	August	September	October	November	December	January	February	Average
System Loss (CF)	11,457	(62,805)	207,282	293,012	148,205	239,150	405,543	272,765	6,087	(21,933)	(11,193)	55,540	71,369	66,492	144,360
System Loss (%)	0.2%	-3.3%	10.3%	14.7%	7.4%	10.0%	14.0%	9.0%	0.2%	-0.9%	-0.5%	2.9%	3.7%	3.5%	6.2%
System Loss (GPM)	1.6	(10.9)	34.4	49.5	25.7	40.5	68.0	45.7	0.9	(3.8)	(1.9)	9.3	12.0	12.2	21.7

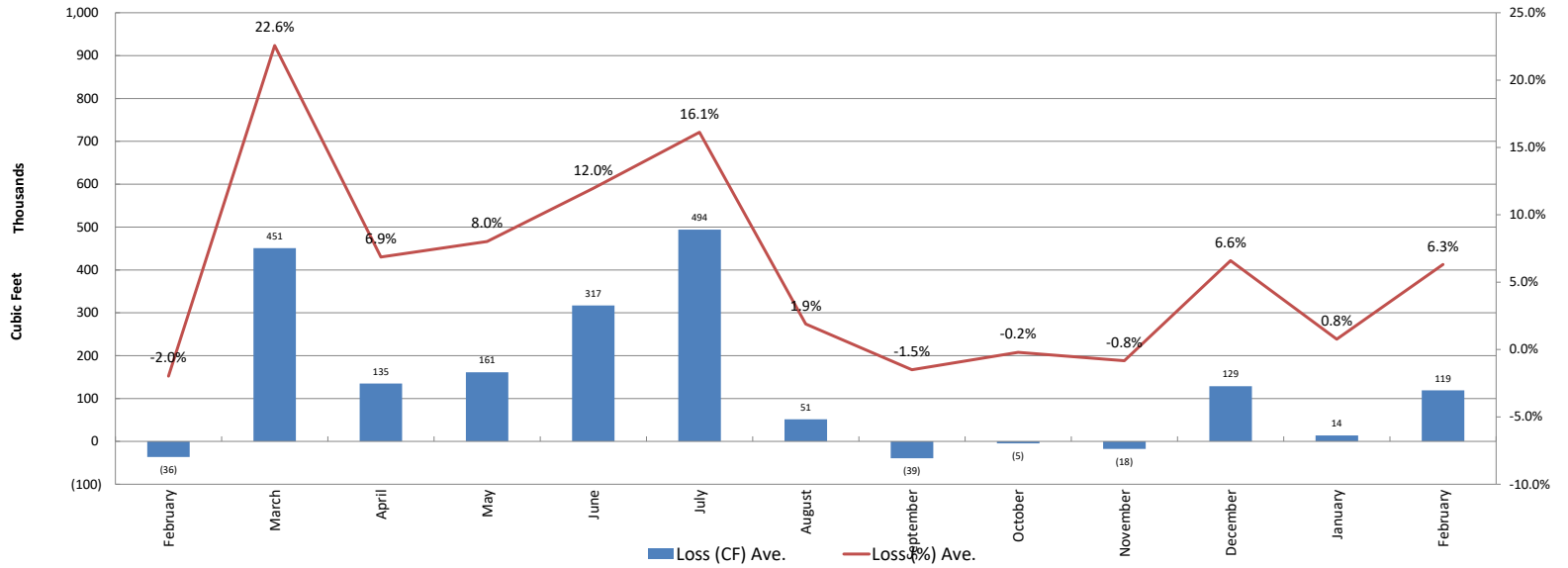
Total Estimated Losses

Total Loss	January	February	March	April	May	June	July	August	September	October	November	December	January	February	Average
Total Loss	3,177	6,161	5,549	20,454	20,743	5,804	16,743	13,971	48,100	9,773	18,330	14,483	22,141	82,493	21,613
Unaccounted for Water (CF)	(89,203)	(36,407)	450,971	135,053	161,358	316,943	494,143	51,388	(39,213)	(4,653)	(17,732)	128,812	13,925	119,058	120,414
Unaccounted For (%)	-4.7%	-2.0%	22.6%	6.9%	8.0%	12.0%	16.1%	1.9%	-1.5%	-0.2%	-0.8%	6.6%	0.8%	6.3%	5.0%
Number of Days in Period	31	28	31	30	30	30	31	31	30	31	30	31	31	28	30

	This Month	Average
Cost of System Loss:	\$4,286	\$5,197
Cost of 5% System Loss:	\$3,393	\$4,002
Amount above (below) 5% System Loss	\$893	\$0

Crestline Village Water District

System Loss Last 13 Months 2025-2026



Crestline Village Water District

System Loss Last 13 Months With Month to Month Averaging

