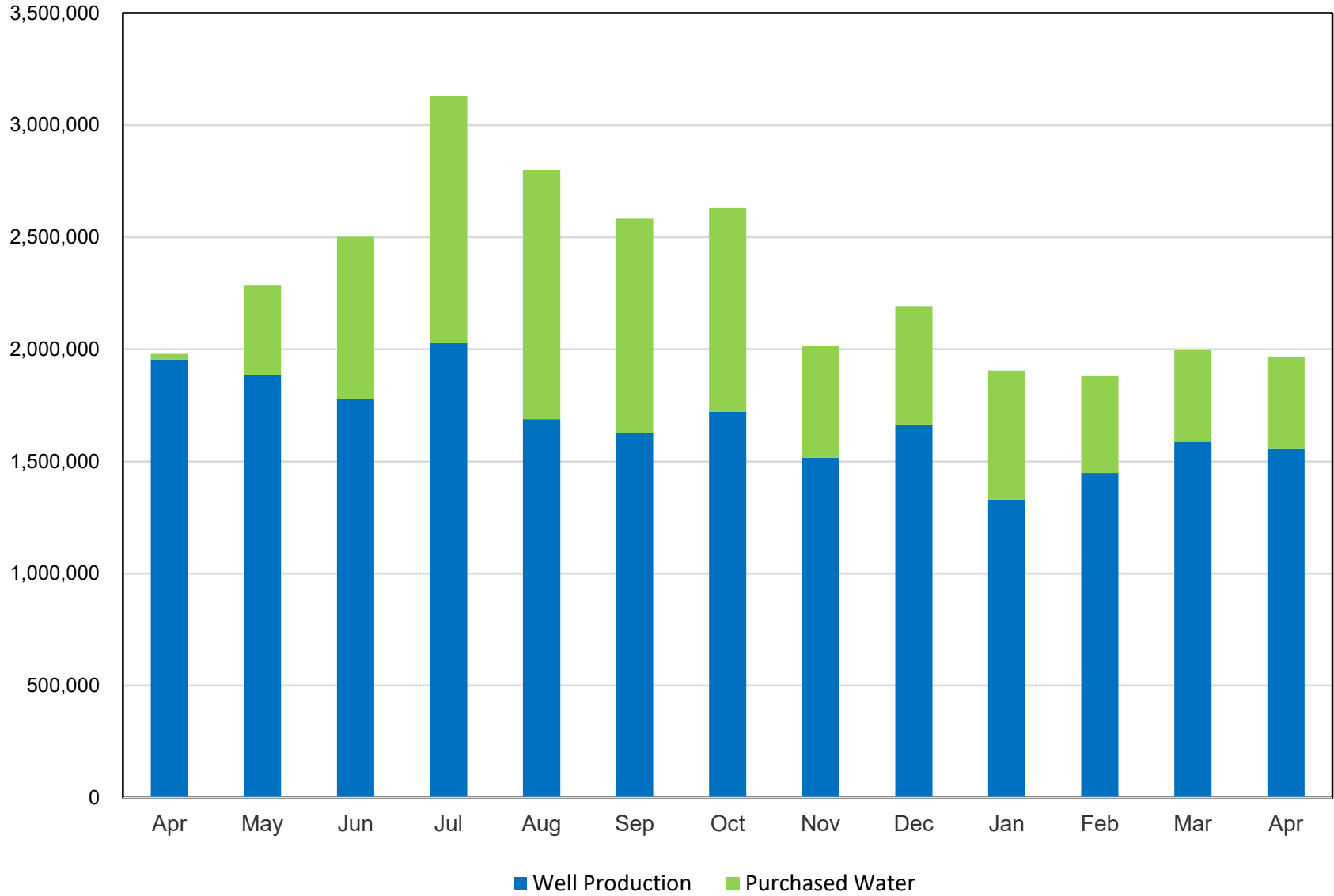


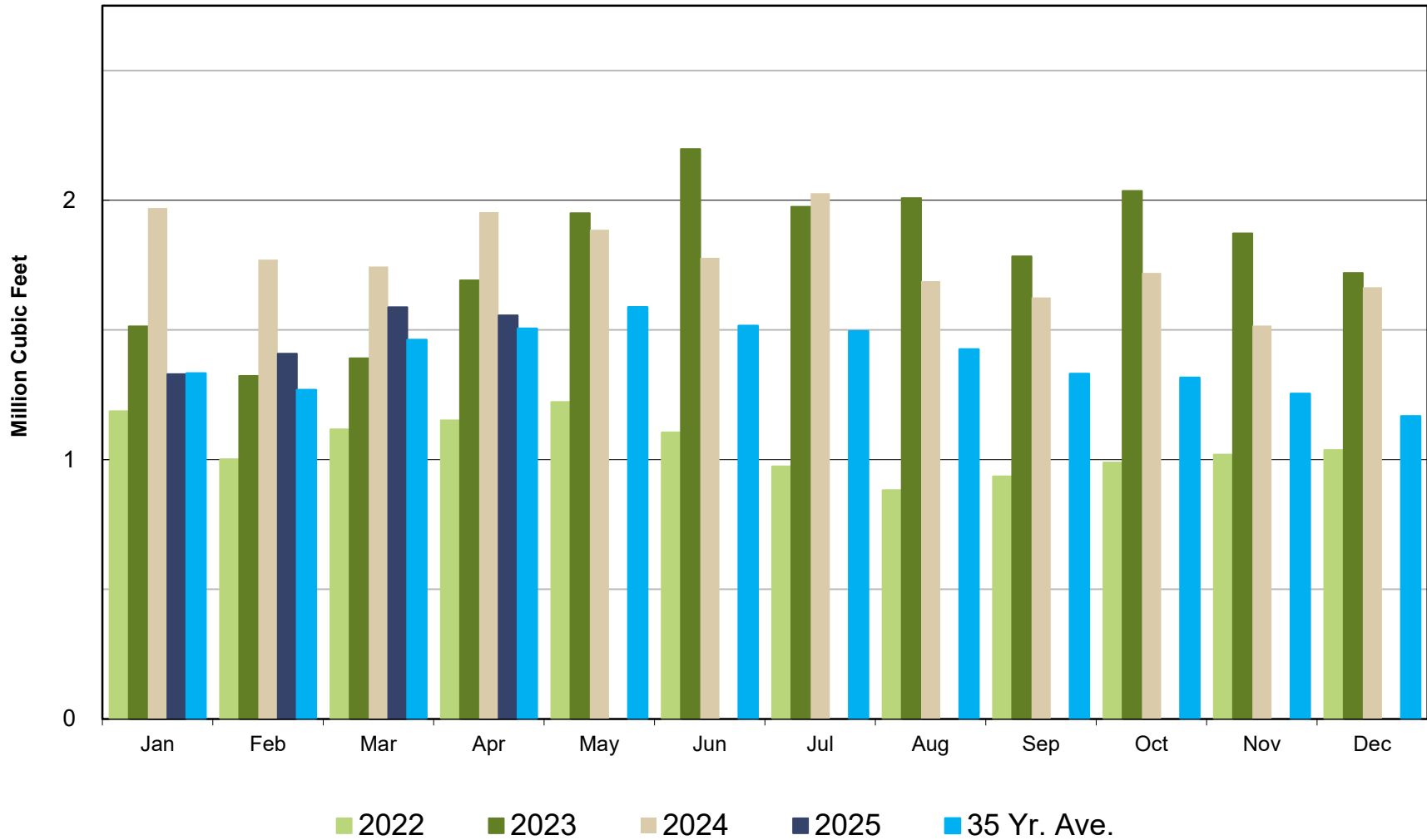
# Crestline Village Water District

## Water Sources - Last 13 Months in Cubic Feet Mar 2024 - Mar 2025



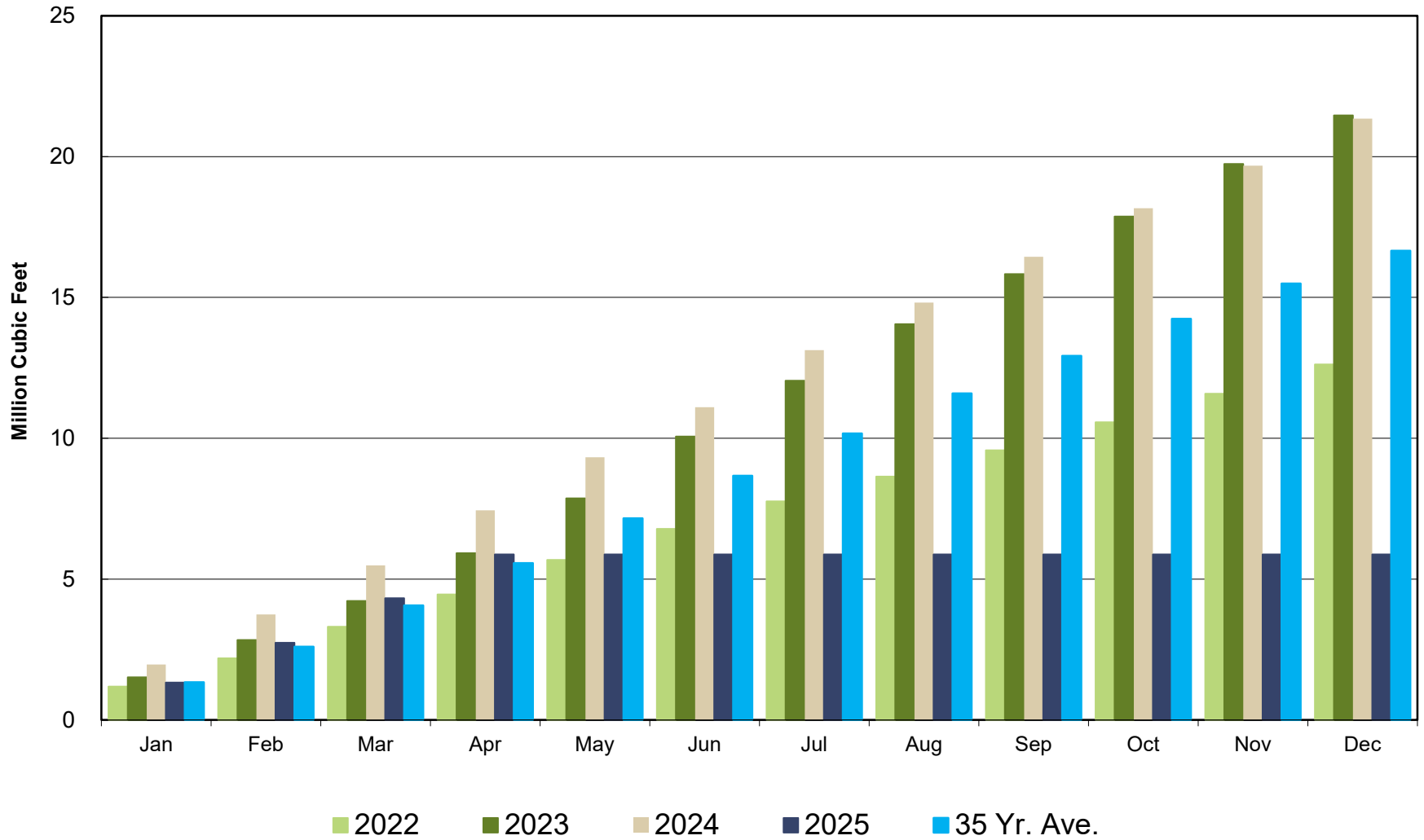
# Crestline Village Water District

## Well Production by Month Comparison



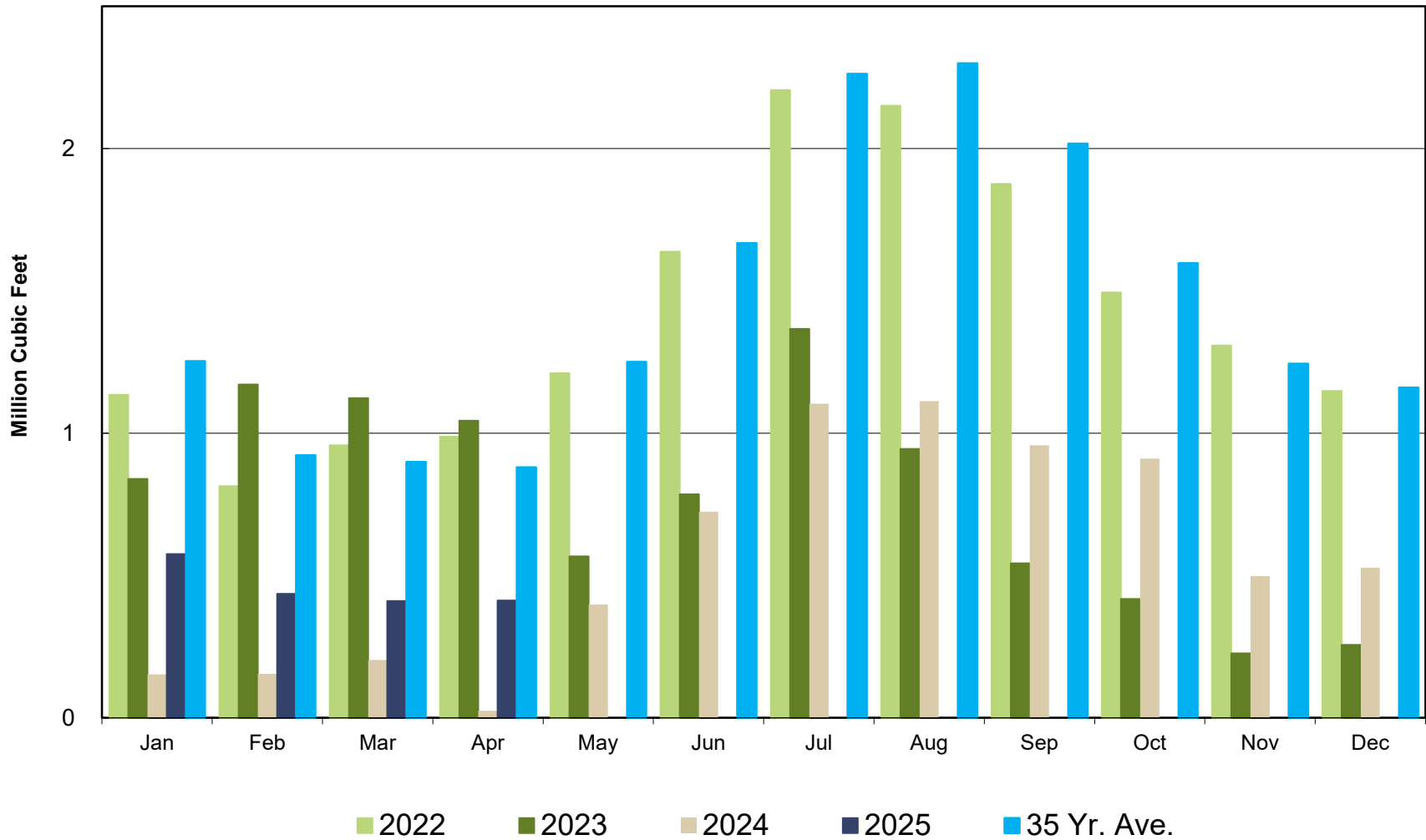
# Crestline Village Water District

## Well Production by Month Cumulative



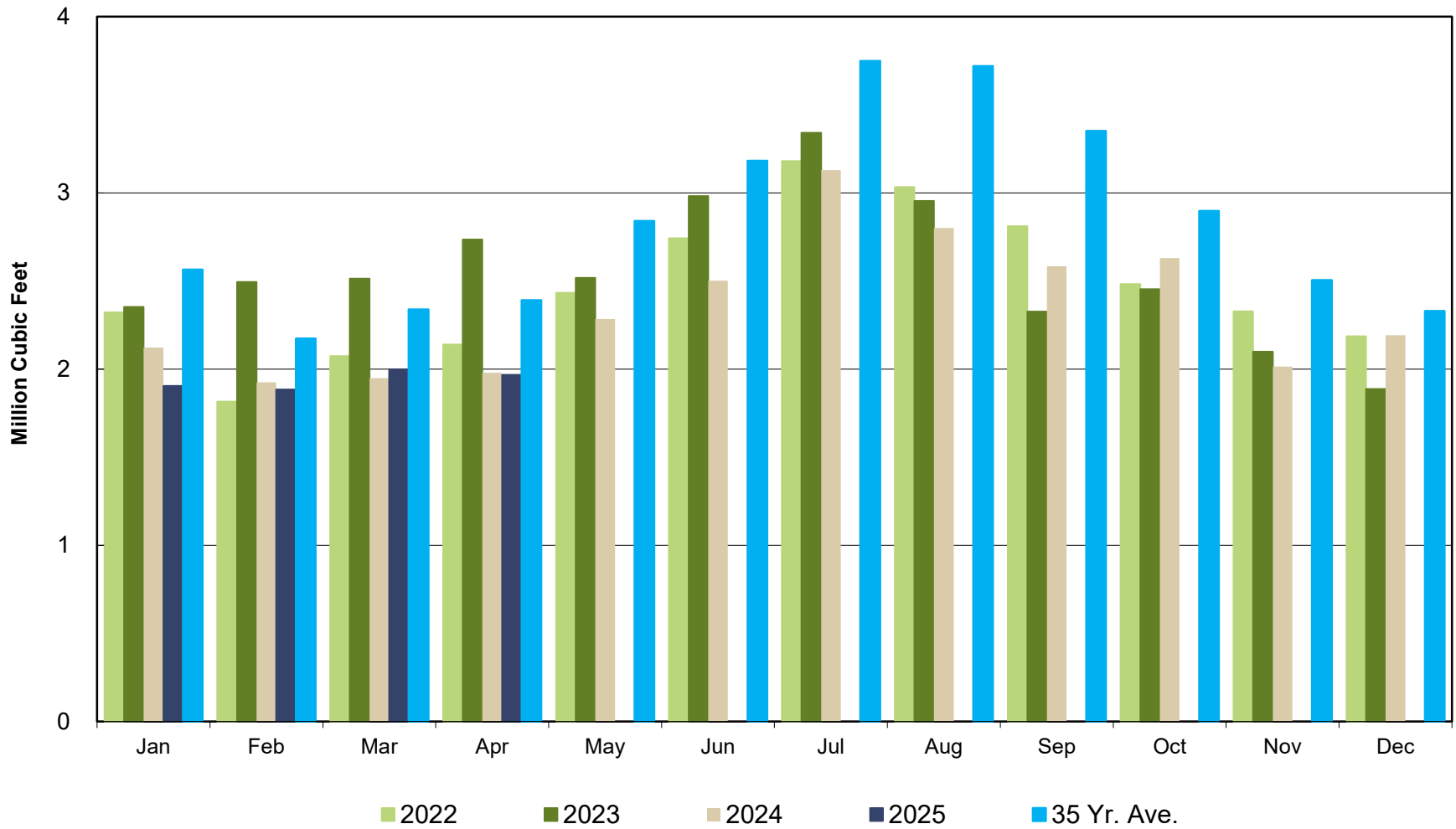
# Crestline Village Water District

## Purchased Water by Month Comparison



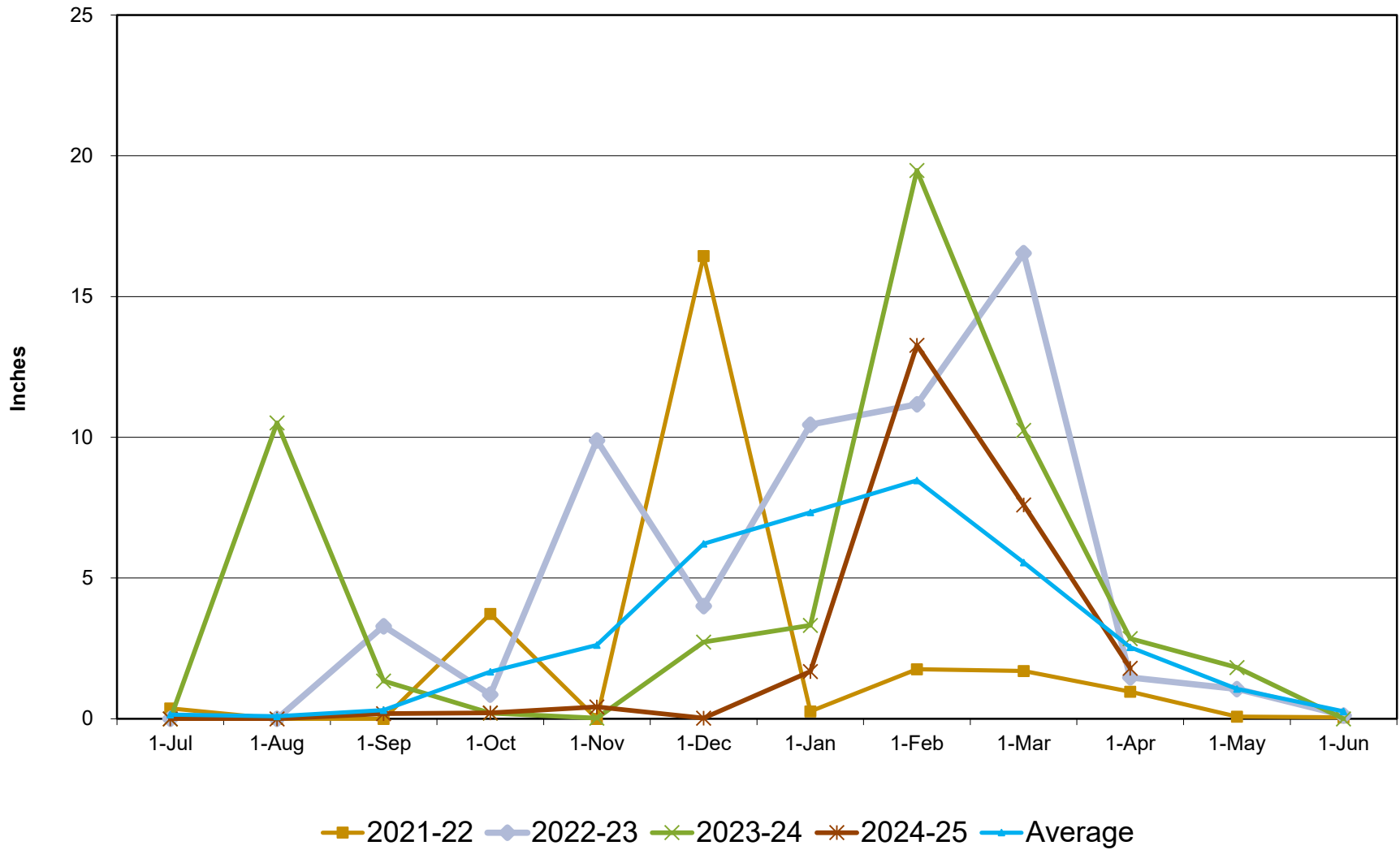
# Crestline Village Water District

## Total Production by Month Comparison



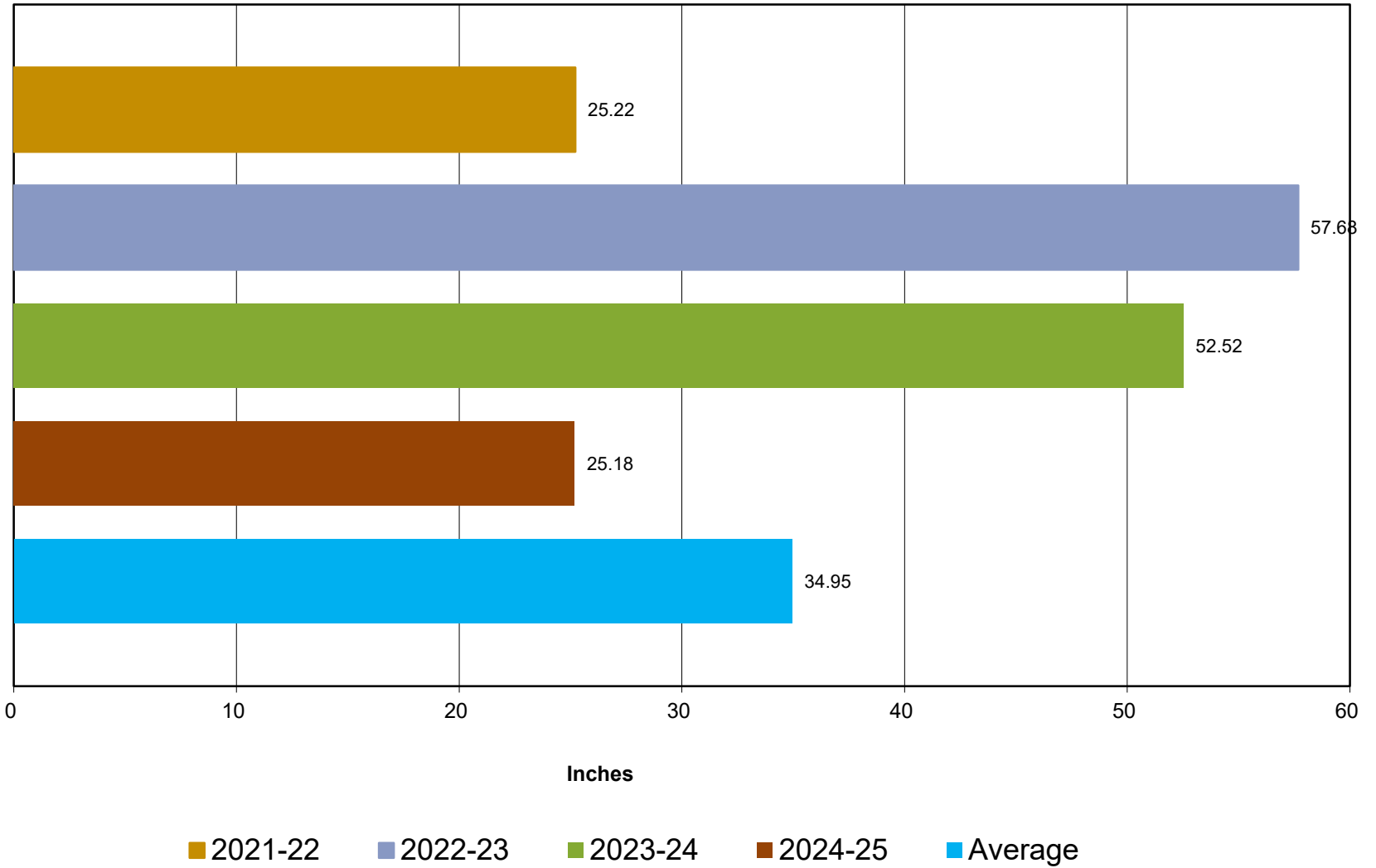
# Crestline Village Water District

## Rainfall Jul 1-Jun 30



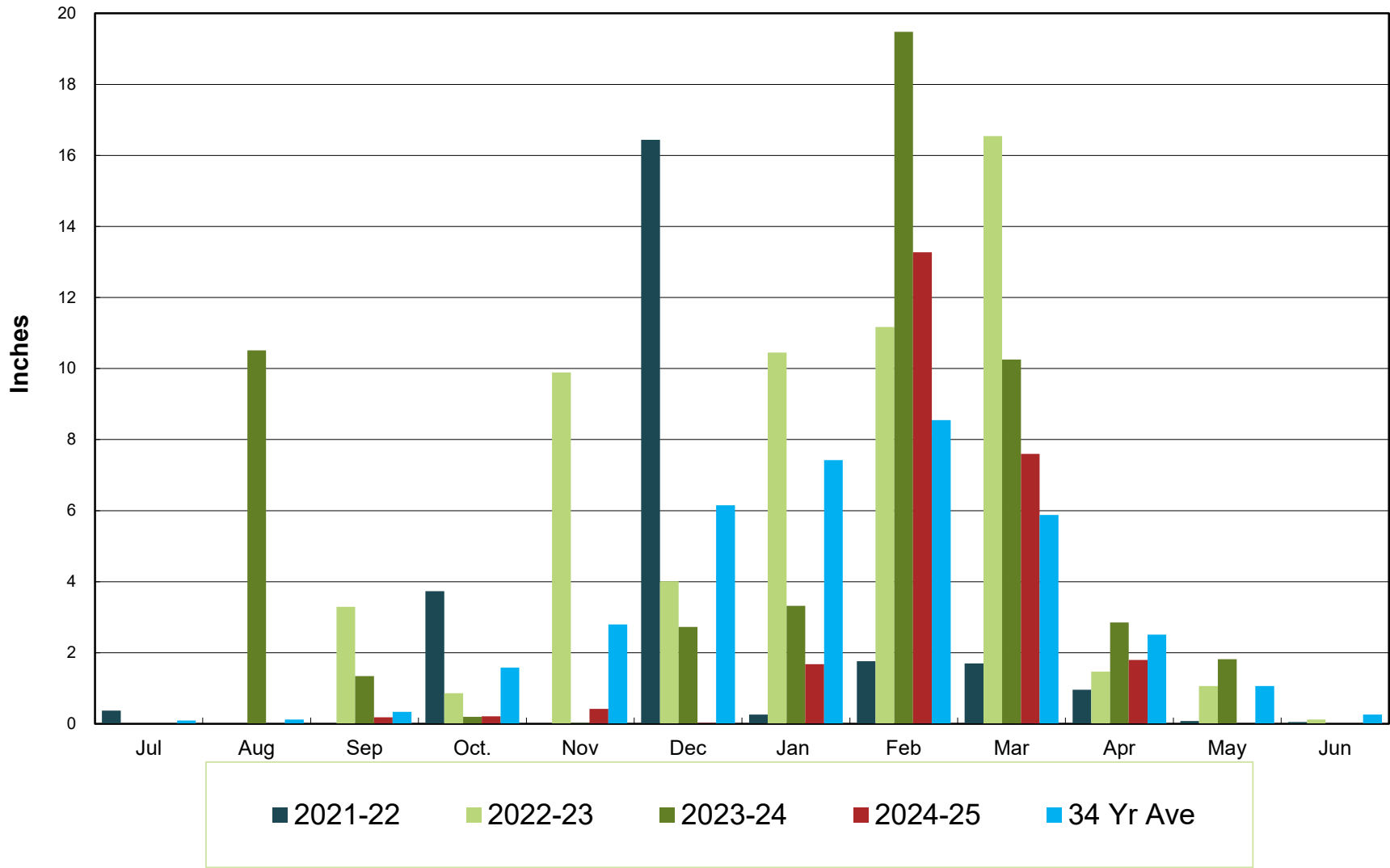
# Crestline Village Water District

## Total Rainfall Jul 1- Jun 30



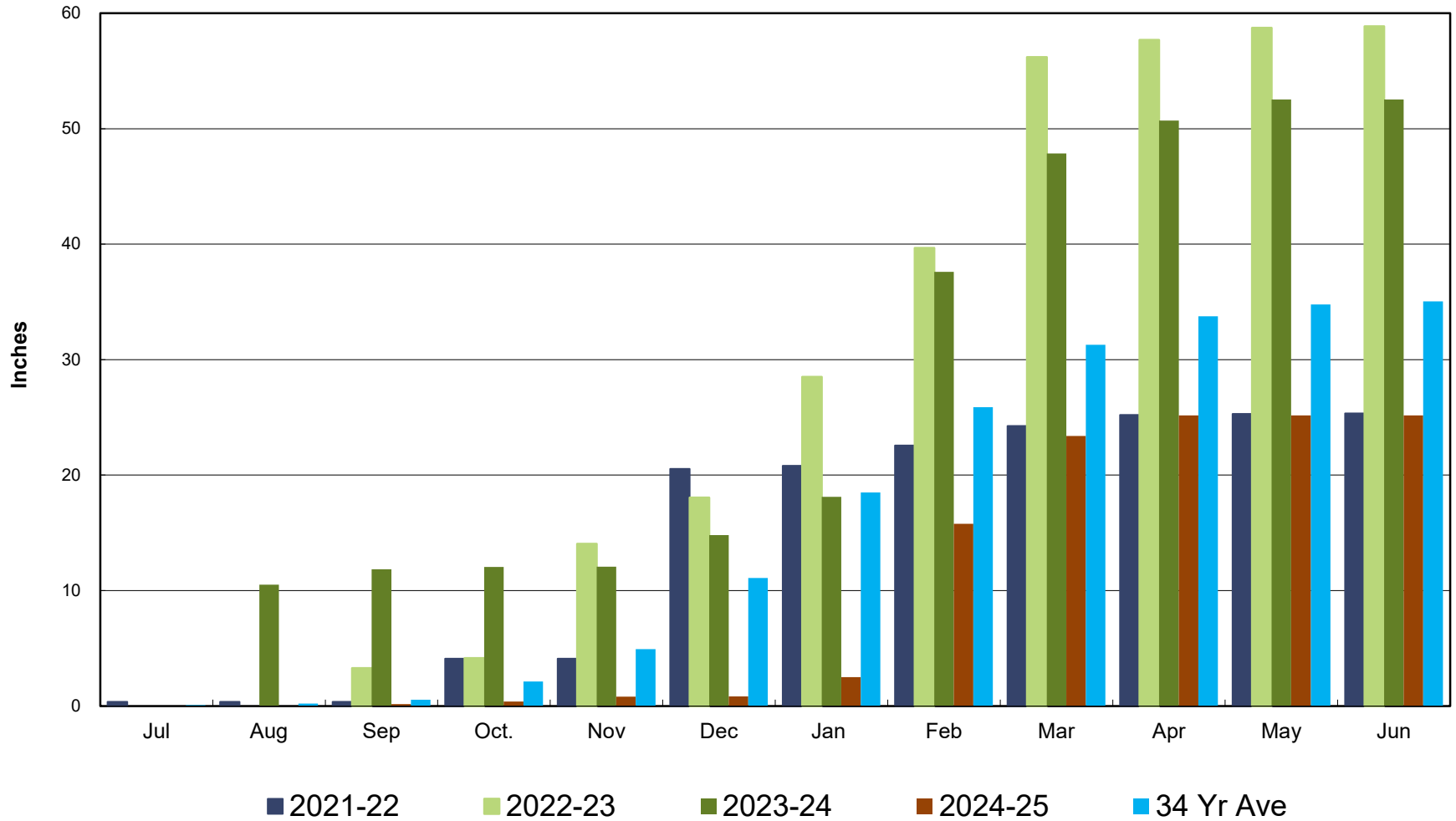
# Crestline Village Water District

## Rainfall by Month



# Crestline Village Water District

## Rainfall Cumulative



**Crestline Village Water District**  
**Change in Water Production - Cubic Feet**  
2020 vs 2024-25

<b>2024-25 Production</b>	<b>Apr</b>	<b>May</b>	<b>Jun</b>	<b>Jul</b>	<b>Aug</b>	<b>Sep</b>	<b>Oct</b>	<b>Nov</b>	<b>Dec</b>	<b>Jan</b>	<b>Feb</b>	<b>Mar</b>	<b>Apr</b>	<b>Average</b>
Wells	1,954,539	1,886,560	1,777,983	2,026,665	1,687,949	1,625,304	1,720,212	1,516,514	1,664,637	1,329,313	1,408,245	1,588,054	1,555,877	1,648,943
CLAWA	24,733	397,380	723,864	1,102,981	1,112,309	957,335	910,316	498,006	526,897	575,008	435,376	410,467	411,959	671,825
<b>Total</b>	<b>1,979,272</b>	<b>2,283,940</b>	<b>2,501,847</b>	<b>3,129,646</b>	<b>2,800,258</b>	<b>2,582,639</b>	<b>2,630,528</b>	<b>2,014,520</b>	<b>2,191,534</b>	<b>1,904,321</b>	<b>1,843,621</b>	<b>1,998,521</b>	<b>1,967,836</b>	<b>2,320,768</b>
<b>2020 Production</b>														
Wells	1,922,894	1,936,457	2,069,986	1,740,467	1,863,039	1,724,448	1,520,142	1,573,711	1,397,987	1,790,808	1,606,207	1,837,581	1,922,894	1,748,644
CLAWA	152,380	712,554	978,249	1,827,648	1,490,709	1,410,963	1,269,277	709,571	795,000	357,741	340,374	230,214	152,380	856,223
<b>Total</b>	<b>2,075,274</b>	<b>2,649,011</b>	<b>3,048,235</b>	<b>3,568,115</b>	<b>3,353,748</b>	<b>3,135,411</b>	<b>2,789,419</b>	<b>2,283,282</b>	<b>2,192,987</b>	<b>2,148,549</b>	<b>1,946,581</b>	<b>2,067,795</b>	<b>2,075,274</b>	<b>2,604,867</b>
<b>Change in Production</b>														
Wells	31,645	(49,897)	(292,003)	286,198	(175,090)	(99,144)	200,070	(57,197)	266,650	(461,495)	(197,962)	(249,527)	(367,017)	(99,701)
CLAWA	(127,647)	(315,174)	(254,385)	(724,667)	(378,400)	(453,628)	(358,961)	(211,565)	(268,103)	217,267	95,002	180,253	259,579	(184,399)
<b>Total</b>	<b>(96,002)</b>	<b>(365,071)</b>	<b>(546,388)</b>	<b>(438,469)</b>	<b>(553,490)</b>	<b>(552,772)</b>	<b>(158,891)</b>	<b>(268,762)</b>	<b>(1,453)</b>	<b>(244,228)</b>	<b>(102,960)</b>	<b>(69,274)</b>	<b>(107,438)</b>	<b>(284,100)</b>
<b>Total (AF)</b>	<b>(2.20)</b>	<b>(8.38)</b>	<b>(12.54)</b>	<b>(10.07)</b>	<b>(12.71)</b>	<b>(12.69)</b>	<b>(3.65)</b>	<b>(6.17)</b>	<b>(0.03)</b>	<b>(5.61)</b>	<b>(2.36)</b>	<b>(1.59)</b>	<b>(2.47)</b>	<b>(6.52)</b>

**Crestline Village Water District**  
**Change in Total Water Consumption - Cubic Feet**  
2020 vs 2024-25

<b>2024-25 Total Consumption</b>	<b>Apr</b>	<b>May</b>	<b>Jun</b>	<b>Jul</b>	<b>Aug</b>	<b>Sep</b>	<b>Oct</b>	<b>Nov</b>	<b>Dec</b>	<b>Jan</b>	<b>Feb</b>	<b>Mar</b>	<b>Apr</b>	<b>Average</b>
Cubic Feet	1,739,690	1,905,983	2,182,219	2,431,800	2,539,780	2,315,120	2,331,800	2,223,900	1,869,900	1,946,900	1,854,200	1,571,500	1,802,600	2,081,309
<b>Total</b>	<b>1,739,690</b>	<b>1,905,983</b>	<b>2,182,219</b>	<b>2,431,800</b>	<b>2,539,780</b>	<b>2,315,120</b>	<b>2,331,800</b>	<b>2,223,900</b>	<b>1,869,900</b>	<b>1,946,900</b>	<b>1,854,200</b>	<b>1,571,500</b>	<b>1,802,600</b>	<b>24,911,877</b>
<b>2020 Total Consumption</b>														
Cubic Feet	1,972,980	2,189,010	2,668,700	2,833,100	3,005,506	2,752,100	2,889,200	2,638,000	2,114,721	2,147,430	1,973,581	1,859,473	1,972,980	2,420,317
<b>Total</b>	<b>1,972,980</b>	<b>2,189,010</b>	<b>2,668,700</b>	<b>2,833,100</b>	<b>3,005,506</b>	<b>2,752,100</b>	<b>2,889,200</b>	<b>2,638,000</b>	<b>2,114,721</b>	<b>2,147,430</b>	<b>1,973,581</b>	<b>1,859,473</b>	<b>1,972,980</b>	<b>29,043,801</b>
<b>Change in Total Consumption</b>														<b>Average</b>
Cubic Feet	(233,290)	(283,027)	(486,481)	(401,300)	(465,726)	(436,980)	(557,400)	(414,100)	(244,821)	(200,530)	(119,381)	(287,973)	(170,380)	(339,008)
<b>Cubic Feet</b>	<b>(233,290)</b>	<b>(283,027)</b>	<b>(486,481)</b>	<b>(401,300)</b>	<b>(465,726)</b>	<b>(436,980)</b>	<b>(557,400)</b>	<b>(414,100)</b>	<b>(244,821)</b>	<b>(200,530)</b>	<b>(119,381)</b>	<b>(287,973)</b>	<b>(170,380)</b>	<b>(339,008)</b>
<b>Total (AF)</b>	<b>(5.36)</b>	<b>(6.50)</b>	<b>(11.17)</b>	<b>(9.21)</b>	<b>(10.69)</b>	<b>(10.03)</b>	<b>(12.80)</b>	<b>(9.51)</b>	<b>(5.62)</b>	<b>(4.60)</b>	<b>(2.74)</b>	<b>(6.61)</b>	<b>(3.91)</b>	<b>(7.78)</b>
<b>% Change</b>	<b>-11.82%</b>	<b>-12.93%</b>	<b>-18.23%</b>	<b>-14.16%</b>	<b>-15.50%</b>	<b>-15.88%</b>	<b>-19.29%</b>	<b>-15.70%</b>	<b>-11.58%</b>	<b>-9.34%</b>	<b>-6.05%</b>	<b>-15.49%</b>	<b>-8.64%</b>	<b>-13.57%</b>
<b>Total</b>	<b>-11.82%</b>	<b>-12.93%</b>	<b>-18.23%</b>	<b>-14.16%</b>	<b>-15.50%</b>	<b>-15.88%</b>	<b>-19.29%</b>	<b>-15.70%</b>	<b>-11.58%</b>	<b>-9.34%</b>	<b>-6.05%</b>	<b>-15.49%</b>	<b>-8.64%</b>	<b>-13.57%</b>

**Crestline Village Water District**  
**Gallons Per Capita Daily Calculation**

	<u>Apr</u>	<u>May</u>	<u>Jun</u>	<u>Jul</u>	<u>Aug</u>	<u>Sep</u>	<u>Oct</u>	<u>Nov</u>	<u>Dec</u>	<u>Jan</u>	<u>Feb</u>	<u>Mar</u>	<u>Apr</u>	<u>Average</u>
Residential Services with 92325 Zip	4,870	4,870	4,870	4,870	4,870	4,870	4,870	4,870	4,870	4,870	4,870	4,870	4,870	4,870
People per Household	2.39	2.39	2.39	2.39	2.39	2.39	2.39	2.39	2.39	2.39	2.39	2.39	2.39	2.39
Est. Full-Time Population	11,639	11,639	11,639	11,639	11,639	11,639	11,639	11,639	11,639	11,639	11,639	11,639	11,639	11,639
Days Per Month	30	31	30	31	31	30	31	30	31	31	28	31	30	30
Gallons Water Consumed	13,012,881	14,256,753	16,322,998	18,189,864	18,997,554	17,317,098	17,441,864	16,634,772	13,986,852	14,562,812	13,869,416	11,754,820	13,483,448	15,528,403
92325 Residential Water Usage (CF)	1,569,590	1,556,810	1,886,700	2,026,100	2,290,100	2,146,500	1,917,100	1,868,300	1,612,200	1,739,900	1,644,600	1,391,300	1,584,300	1,807,192
% Residential Water	90.2%	81.7%	86.5%	83.3%	90.2%	92.7%	82.2%	84.0%	86.2%	89.4%	88.7%	88.5%	87.9%	87.17%
<b>Gallons Per Capita Daily - 2022/23</b>	<b>37.27</b>	<b>39.51</b>	<b>46.75</b>	<b>50.41</b>	<b>52.65</b>	<b>49.60</b>	<b>48.34</b>	<b>47.64</b>	<b>38.77</b>	<b>40.36</b>	<b>42.56</b>	<b>32.58</b>	<b>38.62</b>	<b>43.98</b>
<b>R - Gallons Per Capita Daily - 2022/23</b>	<b>33.62</b>	<b>32.27</b>	<b>40.42</b>	<b>42.01</b>	<b>47.48</b>	<b>45.98</b>	<b>39.75</b>	<b>40.02</b>	<b>33.42</b>	<b>36.07</b>	<b>37.75</b>	<b>28.84</b>	<b>33.94</b>	<b>38.16</b>

**2020**

Residential Services with 92325 Zip	4,870	4,870	4,870	4,870	4,870	4,870	4,870	4,870	4,870	4,870	4,870	4,870	4,870	4,870
People per Household	2.39	2.39	2.39	2.39	2.39	2.39	2.39	2.39	2.39	2.39	2.39	2.39	2.39	2.39
Est. Full-Time Population	11,639	11,639	11,639	11,639	11,639	11,639	11,639	11,639	11,639	11,639	11,639	11,639	11,639	11,639
Days Per Month	30	31	30	31	31	30	31	30	31	31	28	31	30	30
Gallons Water Consumed	14,757,890	16,373,795	19,961,876	21,191,588	22,481,185	20,585,708	21,611,216	19,732,240	15,818,113	16,062,776	14,762,386	13,908,858	14,757,890	18,103,969
92325 Residential Water Usage (CF)	1,715,180	1,967,800	2,263,800	2,357,300	2,551,906	2,752,100	2,752,100	2,219,900	1,910,021	1,846,800	1,735,931	1,562,890	1,715,180	2,136,311
% Residential Water	86.9%	89.9%	84.8%	83.2%	84.9%	100.0%	95.3%	84.2%	90.3%	86.0%	88.0%	84.1%	86.9%	88.13%
<b>Gallons Per Capita Daily - 2020</b>	<b>42.27</b>	<b>45.38</b>	<b>57.17</b>	<b>58.73</b>	<b>62.31</b>	<b>58.96</b>	<b>59.90</b>	<b>56.51</b>	<b>43.84</b>	<b>44.52</b>	<b>45.30</b>	<b>38.55</b>	<b>42.27</b>	<b>51.12</b>
<b>R - Gallons Per Capita Daily - 2020</b>	<b>36.74</b>	<b>40.79</b>	<b>48.50</b>	<b>48.87</b>	<b>52.91</b>	<b>58.96</b>	<b>57.05</b>	<b>47.55</b>	<b>39.60</b>	<b>38.29</b>	<b>39.84</b>	<b>32.40</b>	<b>36.74</b>	<b>45.12</b>
<b>Change R-GPCD 2020-2023</b>	<b>(3.12)</b>	<b>(8.52)</b>	<b>(8.08)</b>	<b>(6.87)</b>	<b>(5.43)</b>	<b>(12.97)</b>	<b>(17.31)</b>	<b>(7.53)</b>	<b>(6.17)</b>	<b>(2.22)</b>	<b>(2.10)</b>	<b>(3.56)</b>	<b>(2.80)</b>	<b>(6.96)</b>
<b>% Change</b>	<b>-8.49%</b>	<b>-20.88%</b>	<b>-16.66%</b>	<b>-14.05%</b>	<b>-10.26%</b>	<b>-22.00%</b>	<b>-30.33%</b>	<b>-15.84%</b>	<b>-15.59%</b>	<b>-5.79%</b>	<b>-5.26%</b>	<b>-10.98%</b>	<b>-7.63%</b>	<b>-15.43%</b>