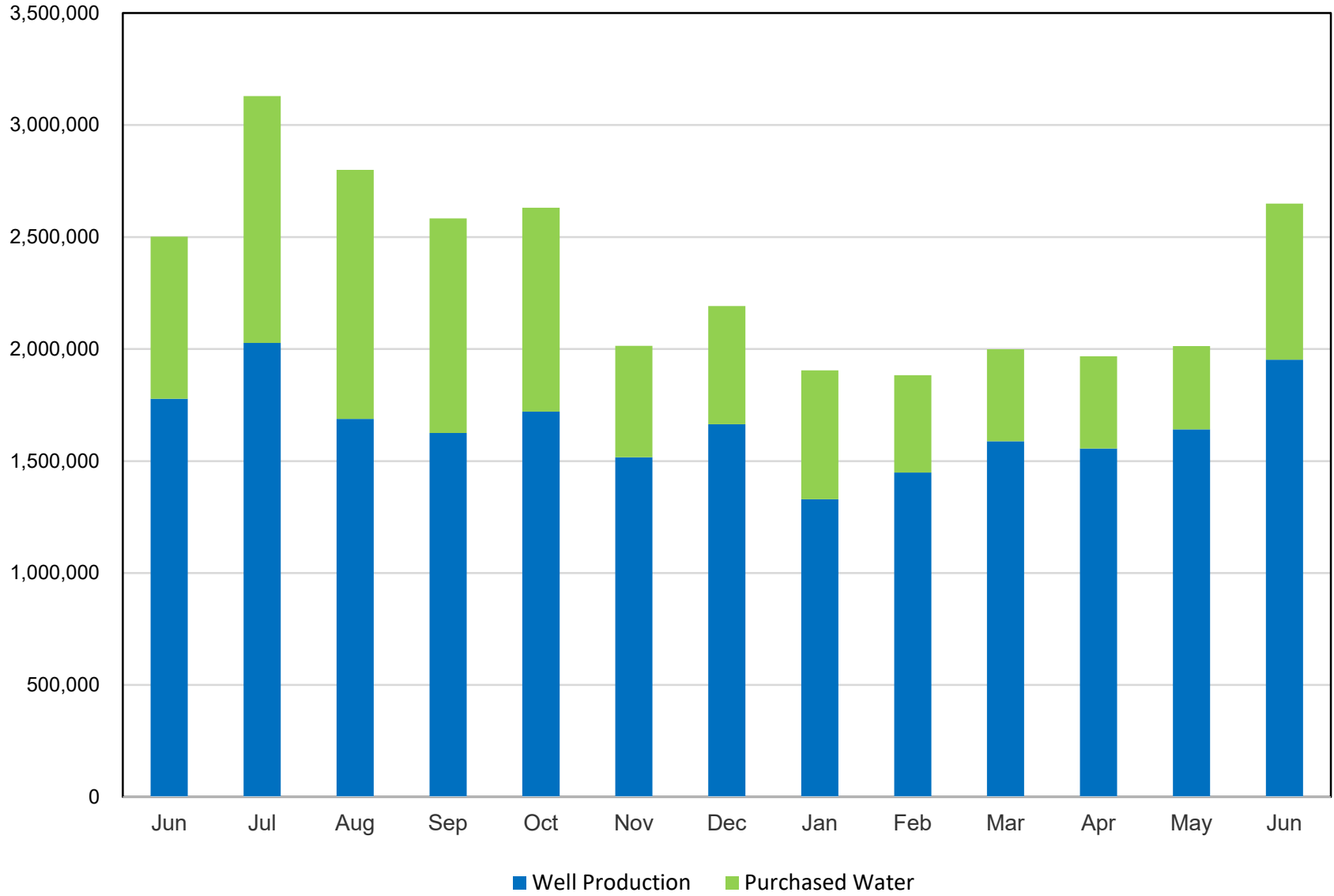


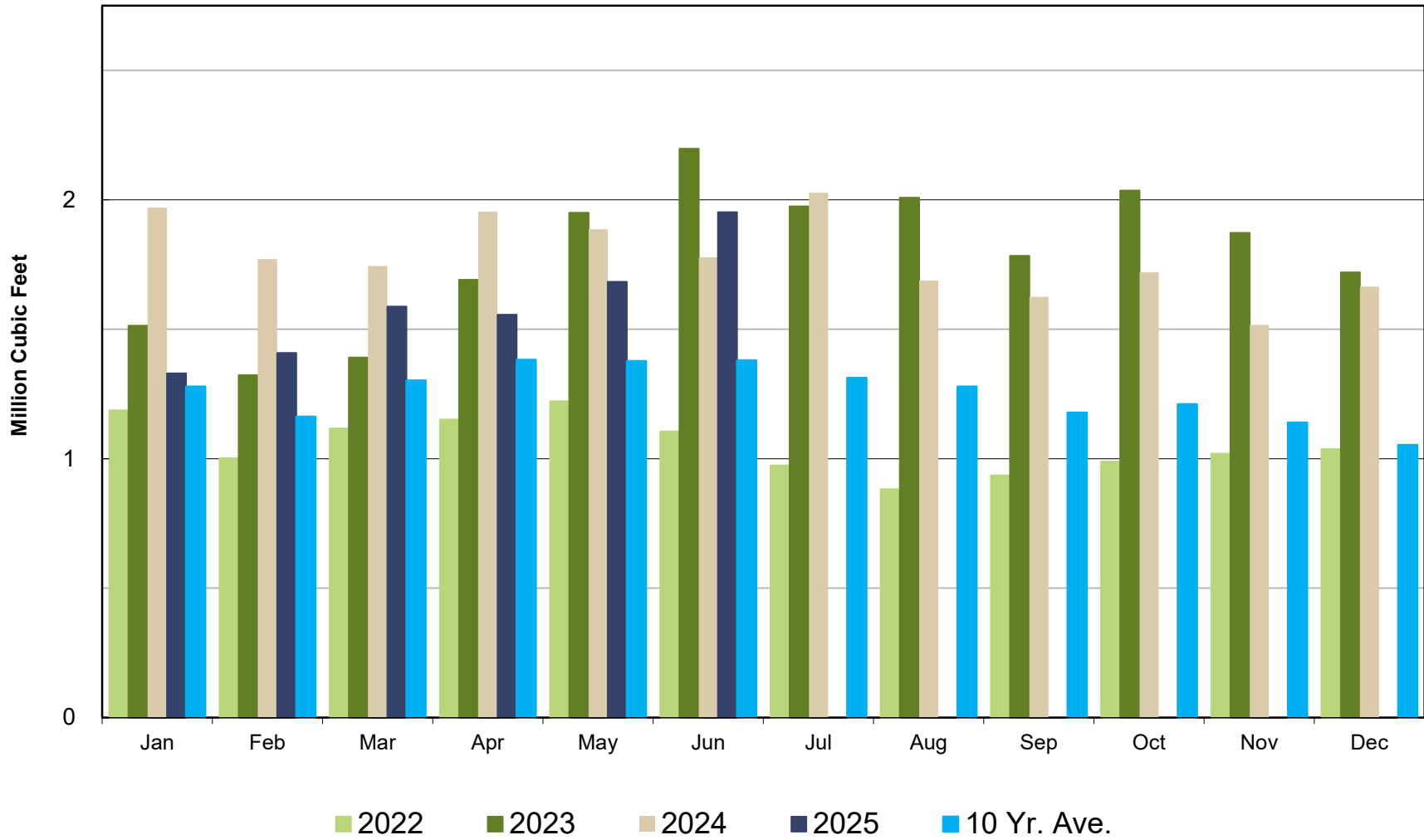
**Crestline Village Water District**  
**Change in Water Production - Cubic Feet**  
 2020 vs 2024-25

<b>2024-25 Production</b>		<b>May</b>	<b>Jun</b>	<b>Jul</b>	<b>Aug</b>	<b>Sep</b>	<b>Oct</b>	<b>Nov</b>	<b>Dec</b>	<b>Jan</b>	<b>Feb</b>	<b>Mar</b>	<b>Apr</b>	<b>May</b>	<b>Jun</b>	<b>Average</b>
Wells		1,886,560	1,777,983	2,026,665	1,687,949	1,625,304	1,720,212	1,516,514	1,664,637	1,329,313	1,408,245	1,588,054	1,555,877	1,683,145	1,952,114	1,646,502
CLAWA		397,380	723,864	1,102,981	1,112,309	957,335	910,316	498,006	526,897	575,008	435,376	410,467	411,959	370,939	696,887	667,373
Total		2,283,940	2,501,847	3,129,646	2,800,258	2,582,639	2,630,528	2,014,520	2,191,534	1,904,321	1,843,621	1,998,521	1,967,836	2,054,084	2,649,001	2,313,876
<b>2020 Production</b>		<b>May</b>	<b>Jun</b>	<b>Jul</b>	<b>Aug</b>	<b>Sep</b>	<b>Oct</b>	<b>Nov</b>	<b>Dec</b>	<b>Jan</b>	<b>Feb</b>	<b>Mar</b>	<b>Apr</b>	<b>May</b>	<b>Jun</b>	<b>Average</b>
Wells		1,936,457	2,069,986	1,740,467	1,863,039	1,724,448	1,520,142	1,573,711	1,397,987	1,790,808	1,606,207	1,837,581	1,922,894	1,936,457	2,069,986	1,748,644
CLAWA		712,554	978,249	1,827,648	1,490,709	1,410,963	1,269,277	709,571	795,000	357,741	340,374	230,214	152,380	712,554	978,249	856,223
Total		2,649,011	3,048,235	3,568,115	3,353,748	3,135,411	2,789,419	2,283,282	2,192,987	2,148,549	1,946,581	2,067,795	2,075,274	2,649,011	3,048,235	2,604,867
<b>Change in Production</b>		<b>May</b>	<b>Jun</b>	<b>Jul</b>	<b>Aug</b>	<b>Sep</b>	<b>Oct</b>	<b>Nov</b>	<b>Dec</b>	<b>Jan</b>	<b>Feb</b>	<b>Mar</b>	<b>Apr</b>	<b>May</b>	<b>Jun</b>	<b>Average</b>
Wells		(49,897)	(292,003)	286,198	(175,090)	(99,144)	200,070	(57,197)	266,650	(461,495)	(197,962)	(249,527)	(367,017)	(253,312)	(117,872)	(102,142)
CLAWA		(315,174)	(254,385)	(724,667)	(378,400)	(453,628)	(358,961)	(211,565)	(268,103)	217,267	95,002	180,253	259,579	(341,615)	(281,362)	(188,850)
Total		(365,071)	(546,388)	(438,469)	(553,490)	(552,772)	(158,891)	(268,762)	(1,453)	(244,228)	(102,960)	(69,274)	(107,438)	(594,927)	(399,234)	(290,992)
<b>2024-25 Total Consumption</b>		<b>May</b>	<b>Jun</b>	<b>Jul</b>	<b>Aug</b>	<b>Sep</b>	<b>Oct</b>	<b>Nov</b>	<b>Dec</b>	<b>Jan</b>	<b>Feb</b>	<b>Mar</b>	<b>Apr</b>	<b>May</b>	<b>Jun</b>	<b>Average</b>
Cubic Feet		1,905,983	2,182,219	2,431,800	2,539,780	2,315,120	2,331,800	2,223,900	1,869,900	1,946,900	1,854,200	1,571,500	1,802,600	1,836,800	2,184,700	2,075,750
Total		1,905,983	2,182,219	2,431,800	2,539,780	2,315,120	2,331,800	2,223,900	1,869,900	1,946,900	1,854,200	1,571,500	1,802,600	1,836,800	2,184,700	24,909,000
<b>2020 Total Consumption</b>		<b>May</b>	<b>Jun</b>	<b>Jul</b>	<b>Aug</b>	<b>Sep</b>	<b>Oct</b>	<b>Nov</b>	<b>Dec</b>	<b>Jan</b>	<b>Feb</b>	<b>Mar</b>	<b>Apr</b>	<b>May</b>	<b>Jun</b>	<b>Average</b>
Cubic Feet		2,189,010	2,668,700	2,833,100	3,005,506	2,752,100	2,889,200	2,638,000	2,114,721	2,147,430	1,973,581	1,859,473	1,972,980	2,189,010	2,668,700	2,420,317
Total		2,189,010	2,668,700	2,833,100	3,005,506	2,752,100	2,889,200	2,638,000	2,114,721	2,147,430	1,973,581	1,859,473	1,972,980	2,189,010	2,668,700	29,043,801
<b>Change in Total Consumption</b>		<b>May</b>	<b>Jun</b>	<b>Jul</b>	<b>Aug</b>	<b>Sep</b>	<b>Oct</b>	<b>Nov</b>	<b>Dec</b>	<b>Jan</b>	<b>Feb</b>	<b>Mar</b>	<b>Apr</b>	<b>May</b>	<b>Jun</b>	<b>Average</b>
Cubic Feet		(283,027)	(486,481)	(401,300)	(465,726)	(436,980)	(557,400)	(414,100)	(244,821)	(200,530)	(119,381)	(287,973)	(170,380)	(352,210)	(484,000)	(344,567)
Cubic Feet		(283,027)	(486,481)	(401,300)	(465,726)	(436,980)	(557,400)	(414,100)	(244,821)	(200,530)	(119,381)	(287,973)	(170,380)	(352,210)	(484,000)	(344,567)
Total (AF)		(6.50)	(11.17)	(9.21)	(10.69)	(10.03)	(12.80)	(9.51)	(5.62)	(4.60)	(2.74)	(6.61)	(3.91)	(8.09)	(11.11)	(7.91)
% Change		-12.93%	-18.23%	-14.16%	-15.50%	-15.88%	-19.29%	-15.70%	-11.58%	-9.34%	-6.05%	-15.49%	-8.64%	-16.09%	-18.14%	-13.82%
Total		-12.93%	-18.23%	-14.16%	-15.50%	-15.88%	-19.29%	-15.70%	-11.58%	-9.34%	-6.05%	-15.49%	-8.64%	-16.09%	-18.14%	-13.82%
<b>Gallons Per Capita Daily Calculation</b>		<b>May</b>	<b>Jun</b>	<b>Jul</b>	<b>Aug</b>	<b>Sep</b>	<b>Oct</b>	<b>Nov</b>	<b>Dec</b>	<b>Jan</b>	<b>Feb</b>	<b>Mar</b>	<b>Apr</b>	<b>May</b>	<b>Jun</b>	<b>Average</b>
<b>2024-25</b>																
92325 Residential Water Usage (CF)		1,556,810	1,886,700	2,026,100	2,290,100	2,146,500	1,917,100	1,868,300	1,612,200	1,739,900	1,644,600	1,391,300	1,584,300	1,594,300	1,834,300	1,804,083
% Residential Water		81.7%	86.5%	83.3%	90.2%	92.7%	82.2%	84.0%	86.2%	89.4%	88.7%	88.5%	87.9%	86.8%	84.0%	86.99%
Gallons Per Capita Daily - 2022/23		39.51	46.75	50.41	52.65	49.60	48.34	47.64	38.77	40.36	42.56	32.58	38.62	38.08	46.80	43.87
Residential - Gallons Per Capita Daily - 2022/23		32.27	40.42	42.01	47.48	45.98	39.75	40.02	33.42	36.07	37.75	28.84	33.94	33.05	39.29	38.13
<b>2020</b>																
92325 Residential Water Usage (CF)		1,967,800	2,263,800	2,357,300	2,551,906	2,752,100	2,752,100	2,219,900	1,910,021	1,846,800	1,735,931	1,562,890	1,715,180	1,967,800	2,263,800	2,136,311
% Residential Water		89.9%	84.8%	83.2%	84.9%	100.0%	95.3%	84.2%	90.3%	86.0%	88.0%	84.1%	86.9%	89.9%	84.8%	88.13%
Gallons Per Capita Daily - 2020		45.38	57.17	58.73	62.31	58.96	59.90	56.51	43.84	44.52	45.30	38.55	42.27	45.38	57.17	51.12
Residential - Gallons Per Capita Daily - 2020		40.79	48.50	48.87	52.91	58.96	57.05	47.55	39.60	38.29	39.84	32.40	36.74	40.79	48.50	45.12
Change Residential-GPCD 2020-2024/25		(8.52)	(8.08)	(6.87)	(5.43)	(12.97)	(17.31)	(7.53)	(6.17)	(2.22)	(2.10)	(3.56)	(2.80)	(7.74)	(9.20)	(6.99)
% Change		-20.88%	-16.66%	-14.05%	-10.26%	-22.00%	-30.33%	-15.84%	-15.59%	-5.79%	-5.26%	-10.98%	-7.63%	-18.97%	-18.98%	-15.49%

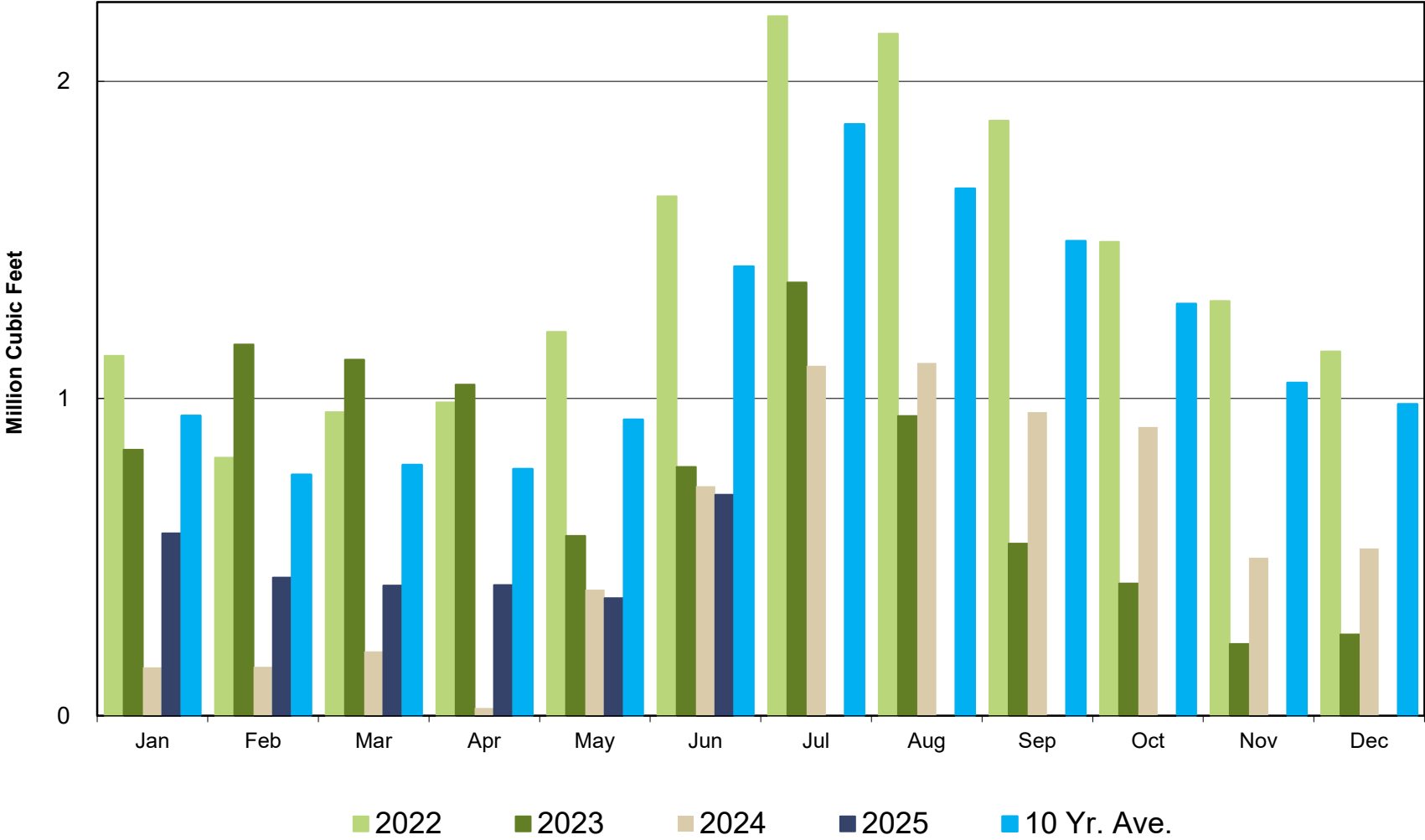
### Water Sources - Last 13 Months in Cubic Feet June 2024 - June 2025



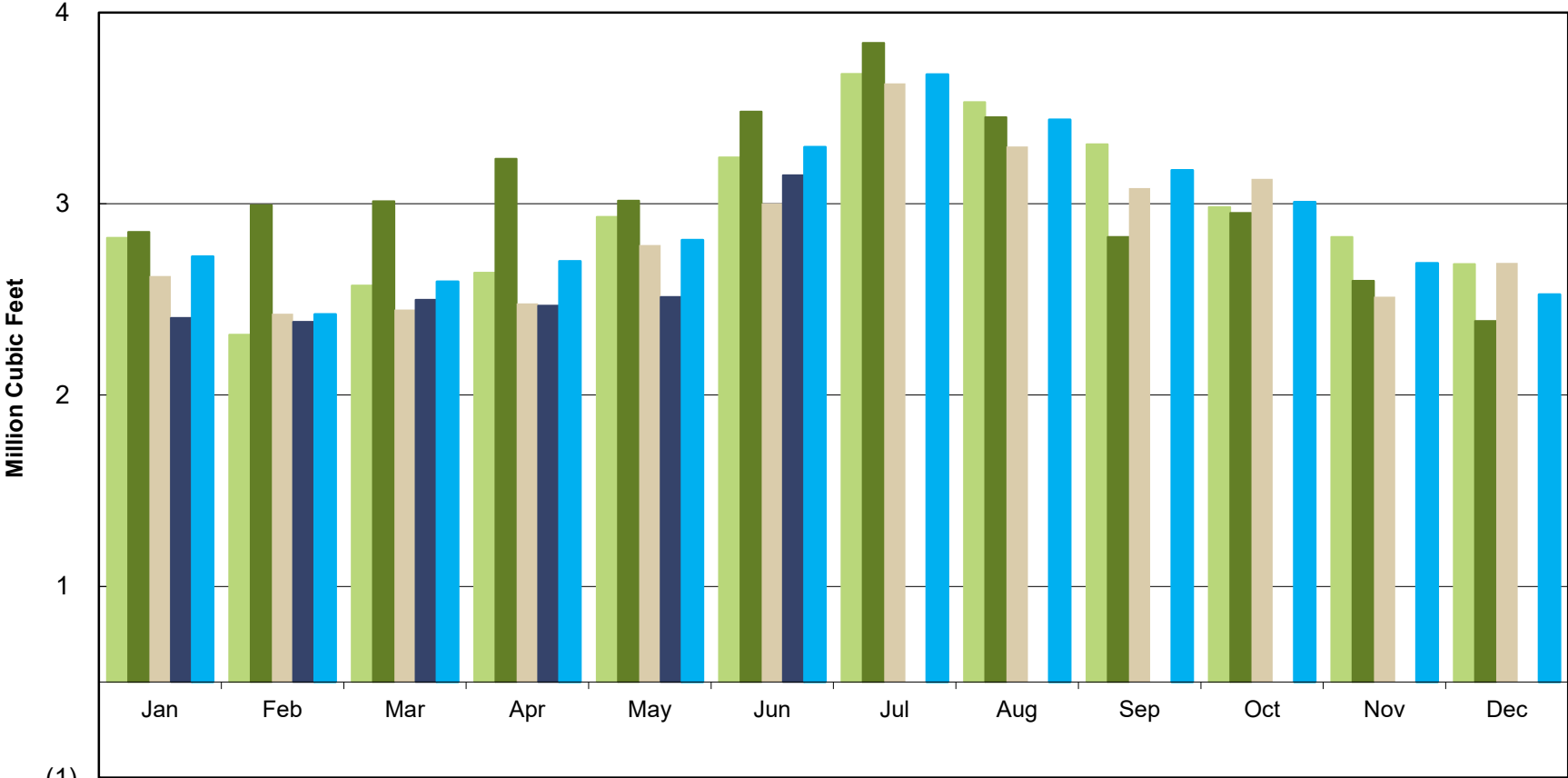
## Well Production by Month Comparison



### Purchased Water by Month Comparison

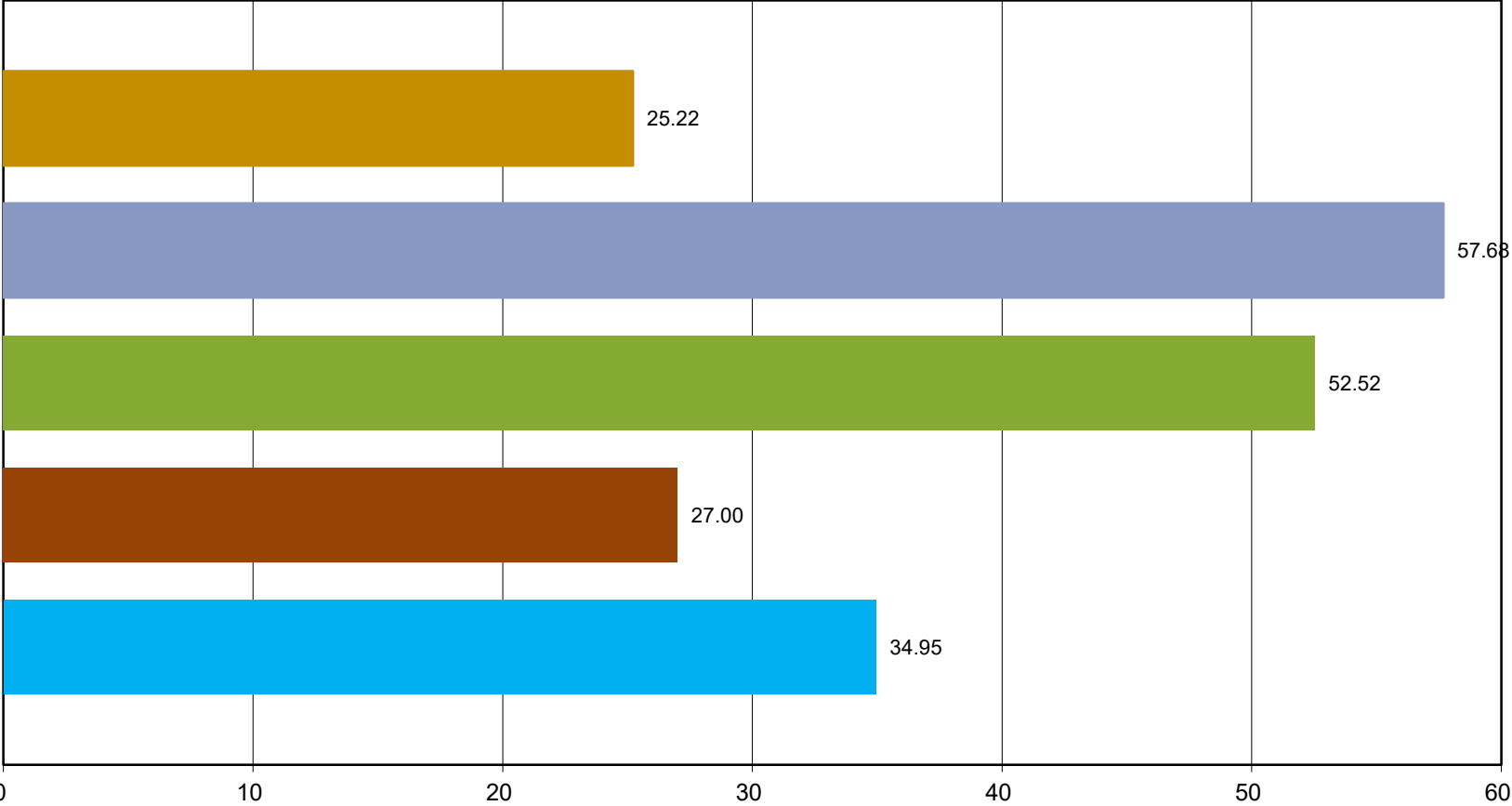


### Total Production by Month Comparison



2022      2023      2024      2025      10 Yr. Ave.

# Total Rainfall Jul 1- Jun 30



■ 2021-22   ■ 2022-23   ■ 2023-24   ■ 2024-25   ■ Average

# Rainfall by Month

