

### Crestline Village Water District Source of Supply Production Report System Loss - Last 13 Months In Cubic Feet

Sources of Supply	July	August	September	October	November	December	January	February	March	April	May	June	July	August	Average
Wells	2,026,665	1,687,949	1,625,304	1,720,212	1,516,541	1,664,637	1,329,313	1,408,245	1,588,054	1,555,877	1,641,672	1,952,114	2,075,309	1,940,991	1,741,883
Purchased Water	1,102,981	1,112,309	957,335	910,316	498,006	526,897	575,008	435,376	410,467	411,959	370,939	696,887	988,183	777,930	571,521
Adjustment to Wells *	0	0	0	0	0	0	0	0	0	0	0	0	0	0	0
<b>Total Water Supplied</b>	<b>3,129,646</b>	<b>2,800,258</b>	<b>2,582,639</b>	<b>2,630,528</b>	<b>2,014,547</b>	<b>2,191,534</b>	<b>1,904,321</b>	<b>1,843,621</b>	<b>1,998,521</b>	<b>1,967,836</b>	<b>2,012,611</b>	<b>2,649,001</b>	<b>3,063,492</b>	<b>2,718,921</b>	<b>2,336,756</b>

Metered Accounts	July	August	September	October	November	December	January	February	March	April	May	June	July	August	Average
Crestline Area	1,110,500	1,150,080	987,720	1,162,200	888,600	1,153,900	926,100	928,800	747,700	856,600	900,600	1,103,522	1,197,300	1,351,500	1,027,279
Lake Gregory Area	1,321,300	1,389,700	1,327,400	1,169,600	1,035,300	1,016,000	1,020,800	925,400	823,800	946,600	936,200	1,222,390	1,297,300	1,339,000	1,111,499
Change in Storage	(16,001)	(13,116)	1,750	31,068	25,271	(93,467)	43,640	23,133	(29,114)	9,129	(6,290)	342	58,006	(36,938)	1,032
Flushing, System & Other	3,318	16,213	2,888	23,075	25,190	2,984	2,984	2,695	5,164	20,454	20,743	5,804	16,743	13,971	12,224
<b>Accounted for Water</b>	<b>2,419,117</b>	<b>2,542,877</b>	<b>2,319,758</b>	<b>2,385,943</b>	<b>1,974,361</b>	<b>2,079,417</b>	<b>1,993,524</b>	<b>1,880,028</b>	<b>1,547,550</b>	<b>1,832,783</b>	<b>1,851,253</b>	<b>2,332,058</b>	<b>2,569,349</b>	<b>2,667,533</b>	<b>2,152,033</b>

#### Total Water Supplied - Total Water Sold

	July	August	September	October	November	December	January	February	March	April	May	June	July	August	Average
System Loss (CF)	710,529	257,381	262,881	244,585	40,186	112,117	(89,203)	(36,407)	450,971	135,053	161,358	316,943	494,143	51,388	184,723
System Loss (%)	22.7%	9.2%	10.2%	9.3%	2.0%	5.1%	-4.7%	-2.0%	22.6%	6.9%	8.0%	12.0%	16.1%	1.9%	7.4%
System Loss (GPM)	111.8	44.6	44.0	41.0	7.2	18.2	(14.9)	(6.8)	75.6	23.4	27.9	53.1	82.8	8.6	31.1

#### Month to Month Averaging

Month to Month Averaging ***	July	August	September	October	November	December	January	February	March	April	May	June	July	August	Average
System Loss (CF)	481,529	483,955	260,131	253,733	142,386	76,151	11,457	(62,805)	207,282	293,012	148,205	239,150	405,543	272,765	187,251
System Loss (%)	16.4%	15.9%	9.7%	9.7%	5.6%	3.6%	0.2%	-3.3%	10.3%	14.7%	7.4%	10.0%	14.0%	9.0%	7.6%
System Loss (GPM)	79.3	78.2	44.3	42.5	24.1	12.7	1.6	(10.9)	34.4	49.5	25.7	40.5	68.0	45.7	35.1

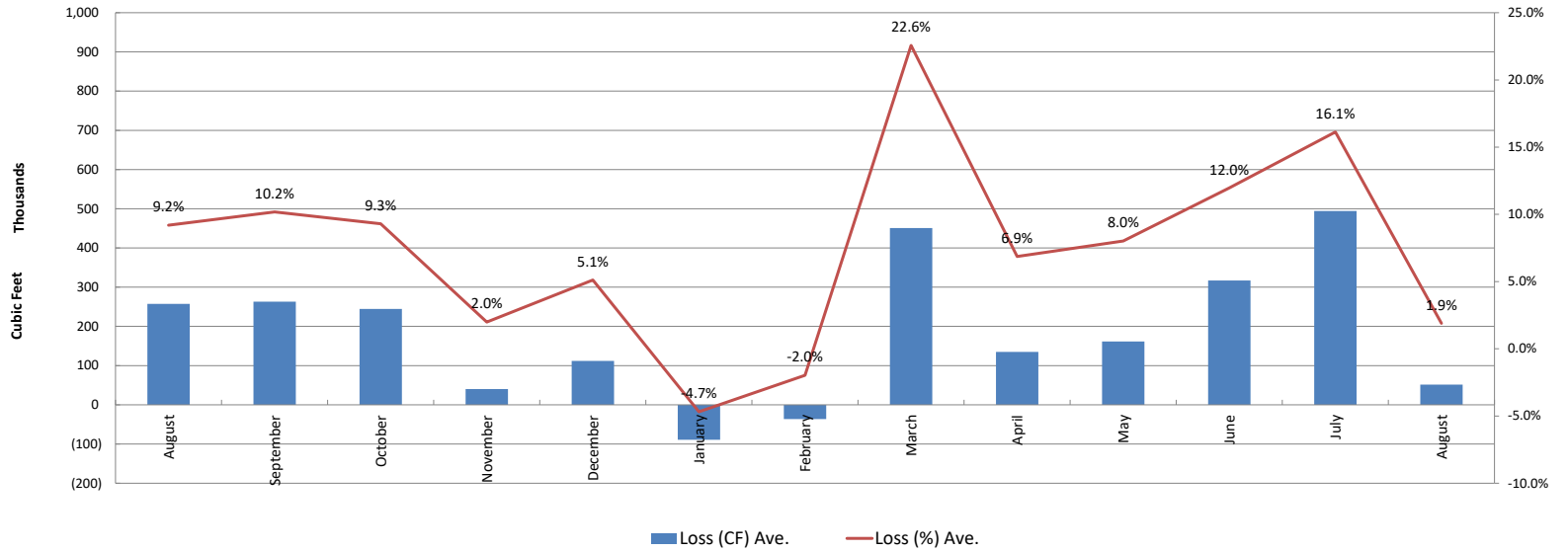
#### Total Estimated Losses

	July	August	September	October	November	December	January	February	March	April	May	June	July	August	Average
Total Loss	57,579	25,646	3,893	26,080	47,899	54,602	3,177	6,161	5,549	20,454	20,743	5,804	16,743	13,971	18,487
Unaccounted for Water (CF)	710,529	257,381	262,881	244,585	40,186	112,117	(89,203)	(36,407)	450,971	135,053	161,358	316,943	494,143	51,388	235,426
Unaccounted For (%)	22.7%	9.2%	10.2%	9.3%	2.0%	5.1%	-4.7%	-2.0%	22.6%	6.9%	8.0%	12.0%	16.1%	1.9%	9.0%
Number of Days in Period	30	30	30	31	29	32	31	28	31	30	30	30	31	31	30

	This Month	Average
Cost of System Loss:	\$1,850	\$6,741
Cost of 5% System Loss:	\$5,514	\$4,206
Amount above (below) 5% System Loss	<b>(\$3,664)</b>	<b>\$0</b>

# Crestline Village Water District

System Loss Last 13 Months  
Month to Month



# Crestline Village Water District

System Loss Last 13 Months  
With Month to Month Averaging

