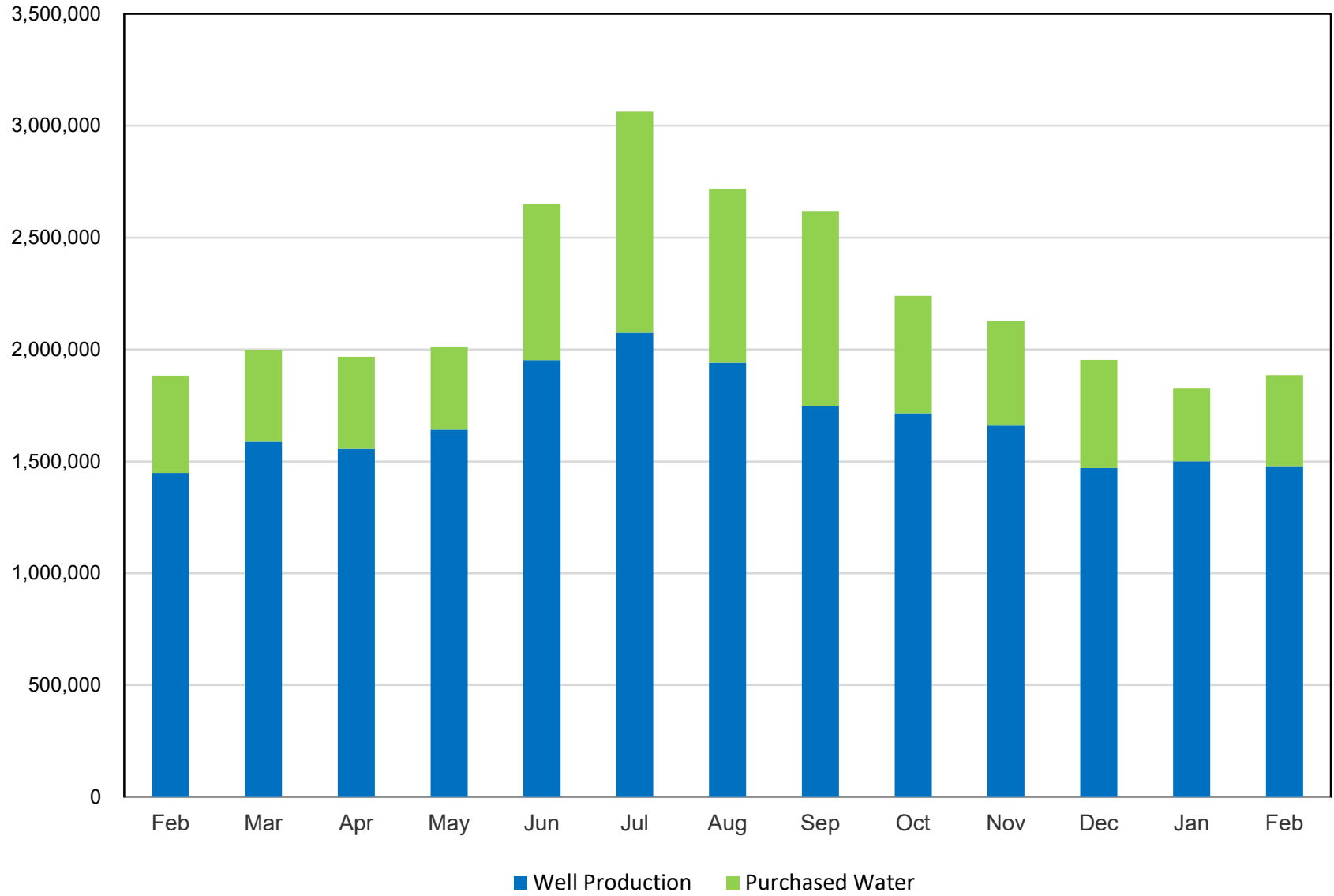


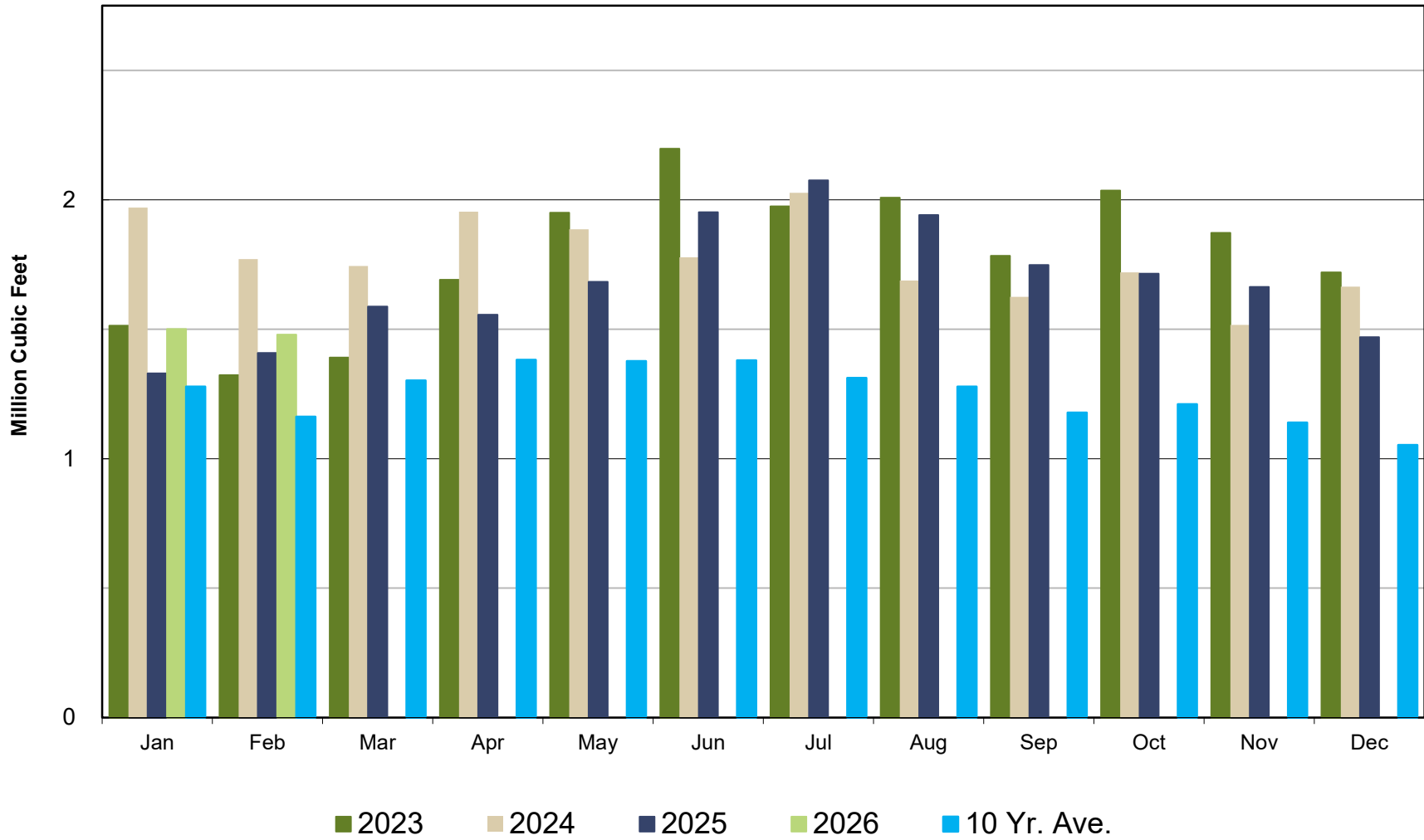
Crestline Village Water District
Change in Water Production - Cubic Feet
2020 vs 2025-26

2025-26 Production														Average
	Feb	Mar	Apr	May	Jun	Jul	Aug	Sep	Oct	Nov	Dec	Jan	Feb	
Wells	1,408,245	1,588,054	1,555,877	1,683,145	1,952,114	2,075,309	1,940,991	1,748,421	1,715,081	1,663,478	1,469,749	1,500,861	1,479,110	1,697,683
CLAWA	435,376	410,467	411,959	370,939	696,887	988,183	777,930	870,070	524,662	466,008	483,526	325,066	405,860	560,963
Total	1,843,621	1,998,521	1,967,836	2,054,084	2,649,001	3,063,492	2,718,921	2,618,491	2,239,743	2,129,486	1,953,275	1,825,927	1,884,970	2,258,646
2020 Production														Average
Wells	1,606,207	1,837,581	1,922,894	1,936,457	2,069,986	1,740,467	1,863,039	1,724,448	1,520,142	1,573,711	1,397,987	1,790,808	1,606,207	1,748,644
CLAWA	340,374	230,214	152,380	712,554	978,249	1,827,648	1,490,709	1,410,963	1,269,277	709,571	795,000	357,741	340,374	856,223
Total	1,946,581	2,067,795	2,075,274	2,649,011	3,048,235	3,568,115	3,353,748	3,135,411	2,789,419	2,283,282	2,192,987	2,148,549	1,946,581	2,604,867
Change in Production														Average
Wells	(197,962)	(249,527)	(367,017)	(253,312)	(117,872)	334,842	77,952	23,973	194,939	89,767	71,762	(289,947)	(127,097)	(50,961)
CLAWA	95,002	180,253	259,579	(341,615)	(281,362)	(839,465)	(712,779)	(540,893)	(744,615)	(243,563)	(311,474)	(32,675)	65,486	(295,260)
Total	(102,960)	(69,274)	(107,438)	(594,927)	(399,234)	(504,623)	(634,827)	(516,920)	(549,676)	(153,796)	(239,712)	(322,622)	(61,611)	(346,222)
2025-26 Total Consumption														Average
Cubic Feet	1,854,200	1,571,500	1,802,600	1,836,800	2,184,700	2,494,800	2,690,500	2,637,100	2,246,600	2,143,900	1,777,300	1,848,400	1,848,000	2,090,183
Total	1,854,200	1,571,500	1,802,600	1,836,800	2,184,700	2,494,800	2,690,500	2,637,100	2,246,600	2,143,900	1,777,300	1,848,400	1,848,000	2,098,908
2020 Total Consumption														Average
Cubic Feet	1,973,581	1,859,473	1,972,980	2,189,010	2,668,700	2,833,100	3,005,506	3,281,600	2,889,200	2,638,000	2,114,721	2,147,430	1,973,581	2,464,442
Total	1,973,581	1,859,473	1,972,980	2,189,010	2,668,700	2,833,100	3,005,506	3,281,600	2,889,200	2,638,000	2,114,721	2,147,430	1,973,581	2,464,442
Change in Total Consumption														Average
Cubic Feet	(119,381)	(287,973)	(170,380)	(352,210)	(484,000)	(338,300)	(315,006)	(644,500)	(642,600)	(494,100)	(337,421)	(299,030)	(125,581)	(374,258)
Cubic Feet	(119,381)	(287,973)	(170,380)	(352,210)	(484,000)	(338,300)	(315,006)	(644,500)	(642,600)	(494,100)	(337,421)	(299,030)	(125,581)	(374,258)
Total (AF)	(2.74)	(6.61)	(3.91)	(8.09)	(11.11)	(7.77)	(7.23)	(14.80)	(14.75)	(11.34)	(7.75)	(6.86)	(2.88)	(8.59)
% Change	-6.05%	-15.49%	-8.64%	-16.09%	-18.14%	-11.94%	-10.48%	-19.64%	-22.24%	-18.73%	-15.96%	-13.93%	-6.36%	-14.40%
Total	-6.05%	-15.49%	-8.64%	-16.09%	-18.14%	-11.94%	-10.48%	-19.64%	-22.24%	-18.73%	-15.96%	-13.93%	-6.36%	-14.40%
Gallons Per Capita Daily Calculation														
2025-26														
Residential Services with 92325 Zip	4,870	4,870	4,870	4,870	4,870	4,870	4,870	4,870	4,870	4,870	4,870	4,870	4,870	4,870
People per Household	2.39	2.39	2.39	2.39	2.39	2.39	2.39	2.39	2.39	2.39	2.39	2.39	2.39	2.39
Est. Full-Time Population	11,639	11,639	11,639	11,639	11,639	11,639	11,639	11,639	11,639	11,639	11,639	11,639	11,639	11,639
Days Per Month	28	31	30	31	30	31	31	30	31	30	31	31	28	30
Gallons Water Consumed	13,869,416	11,754,820	13,483,448	13,739,264	16,341,556	18,661,104	20,124,940	19,725,508	16,804,568	16,036,372	13,294,204	13,826,032	13,823,040	15,565,880
92325 Residential Water Usage (CF)	1,644,600	1,391,300	1,584,300	1,594,300	1,834,300	2,040,400	2,164,800	2,176,200	1,883,800	1,883,801	1,579,100	1,632,100	1,744,700	1,793,067
% Residential Water	88.7%	88.5%	87.9%	86.8%	84.0%	81.8%	80.5%	82.5%	83.9%	87.9%	88.9%	88.3%	94.4%	85.88%
Gallons Per Capita Daily - 2025/26	42.56	32.58	38.62	38.08	46.80	51.72	55.78	56.49	46.57	45.93	36.85	38.32	42.42	44.24
Residential - Gallons Per Capita Daily - 2025/26	37.75	28.84	33.94	33.05	39.29	42.30	44.88	46.62	39.05	40.36	32.74	33.84	40.05	37.94
2020														
Residential Services with 92325 Zip	4,870	4,870	4,870	4,870	4,870	4,870	4,870	4,870	4,870	4,870	4,870	4,870	4,870	4,870
People per Household	2.39	2.39	2.39	2.39	2.39	2.39	2.39	2.39	2.39	2.39	2.39	2.39	2.39	2.39
Est. Full-Time Population	11,639	11,639	11,639	11,639	11,639	11,639	11,639	11,639	11,639	11,639	11,639	11,639	11,639	11,639
Days Per Month	28	31	30	31	30	31	31	30	31	30	31	31	28	30
Gallons Water Consumed	14,762,386	13,908,858	14,757,890	16,373,795	19,961,876	21,191,588	22,481,185	24,546,368	21,611,216	19,732,240	15,816,113	16,062,776	14,762,386	18,434,024
92325 Residential Water Usage (CF)	1,735,931	1,562,890	1,715,180	1,967,800	2,263,800	2,357,300	2,551,906	2,752,100	2,421,300	2,219,900	1,910,021	1,846,800	1,735,931	2,108,744
% Residential Water	88.0%	84.1%	86.9%	89.9%	84.8%	83.2%	83.9%	83.9%	83.8%	84.2%	90.3%	86.0%	88.0%	85.83%
Gallons Per Capita Daily - 2020	45.30	38.55	42.27	45.38	57.17	58.73	62.31	70.30	59.90	56.51	43.84	44.52	45.30	52.06
Residential - Gallons Per Capita Daily - 2020	39.84	32.40	36.74	40.79	48.50	48.87	52.91	58.95	50.20	47.55	39.60	38.29	39.84	44.55
Change Residential-GPCD 2020-2025/26	(2.10)	(3.56)	(2.80)	(7.74)	(9.20)	(6.57)	(8.03)	(12.34)	(11.15)	(7.20)	(6.86)	(4.45)	0.20	(6.61)
% Change	-5.26%	-10.98%	-7.63%	-18.97%	-18.98%	-13.44%	-15.17%	-20.92%	-22.20%	-15.14%	-17.32%	-11.62%	0.50%	-14.84%

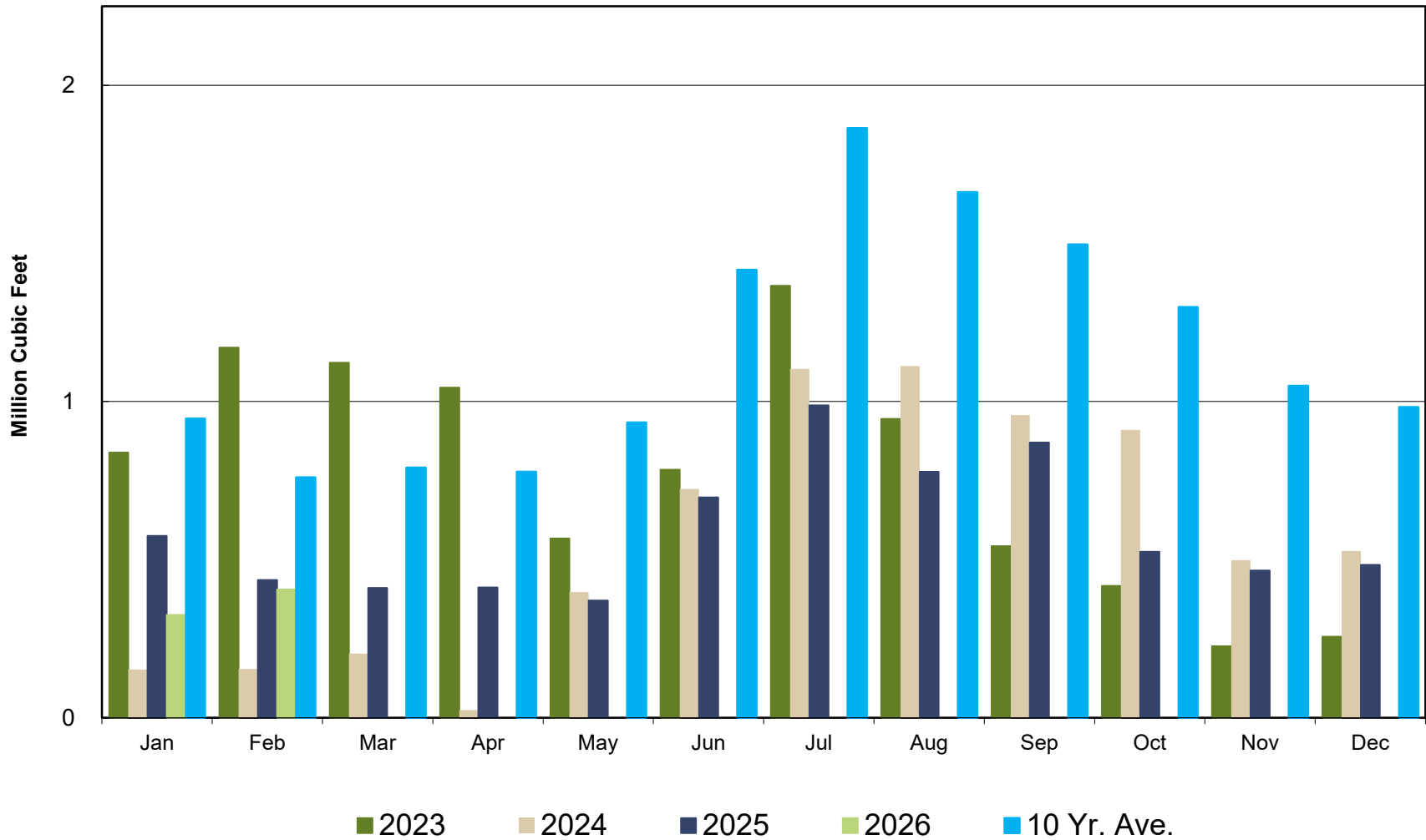
Water Sources - Last 13 Months in Cubic Feet February 2025 - February 2026



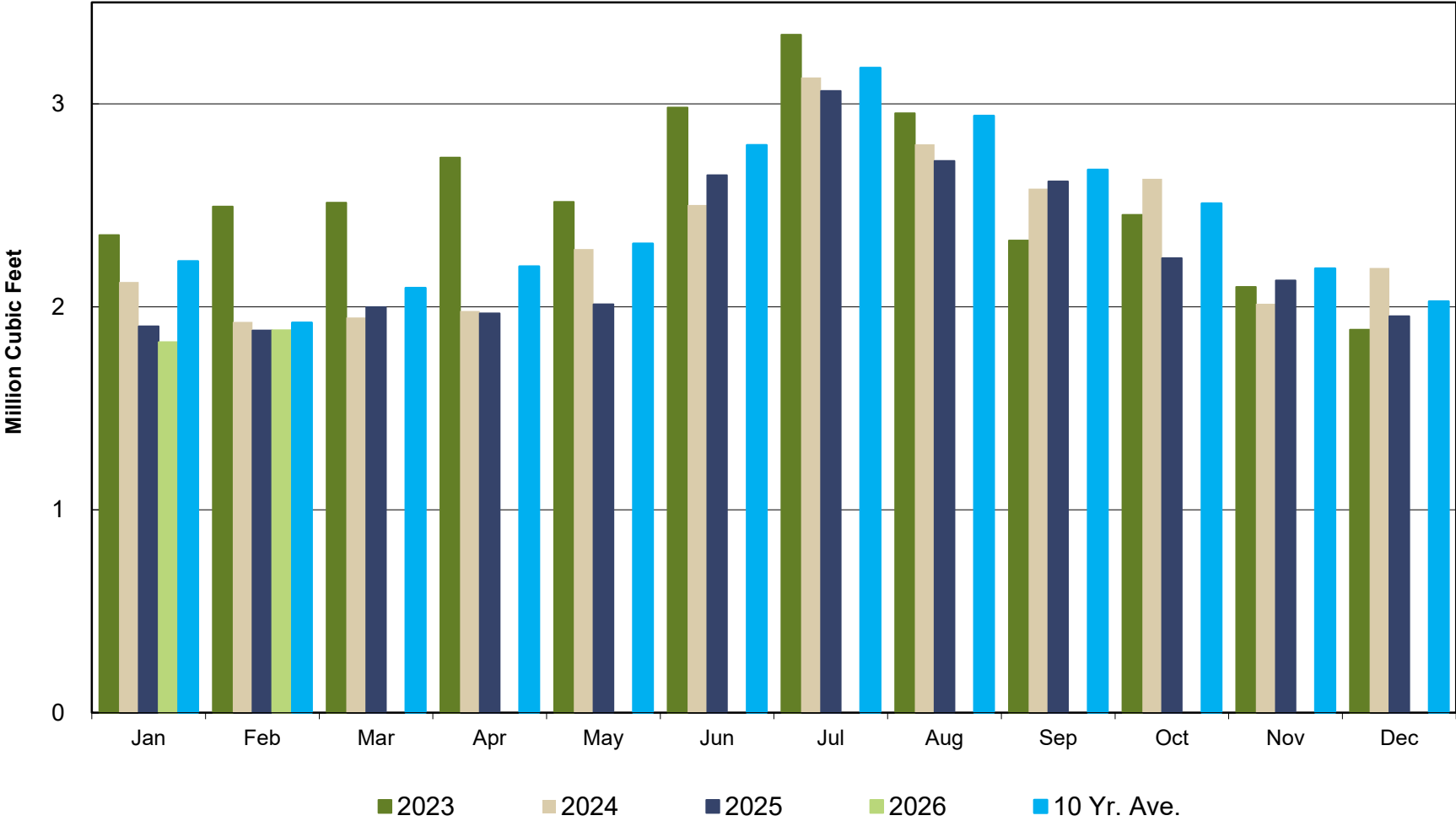
Well Production by Month Comparison



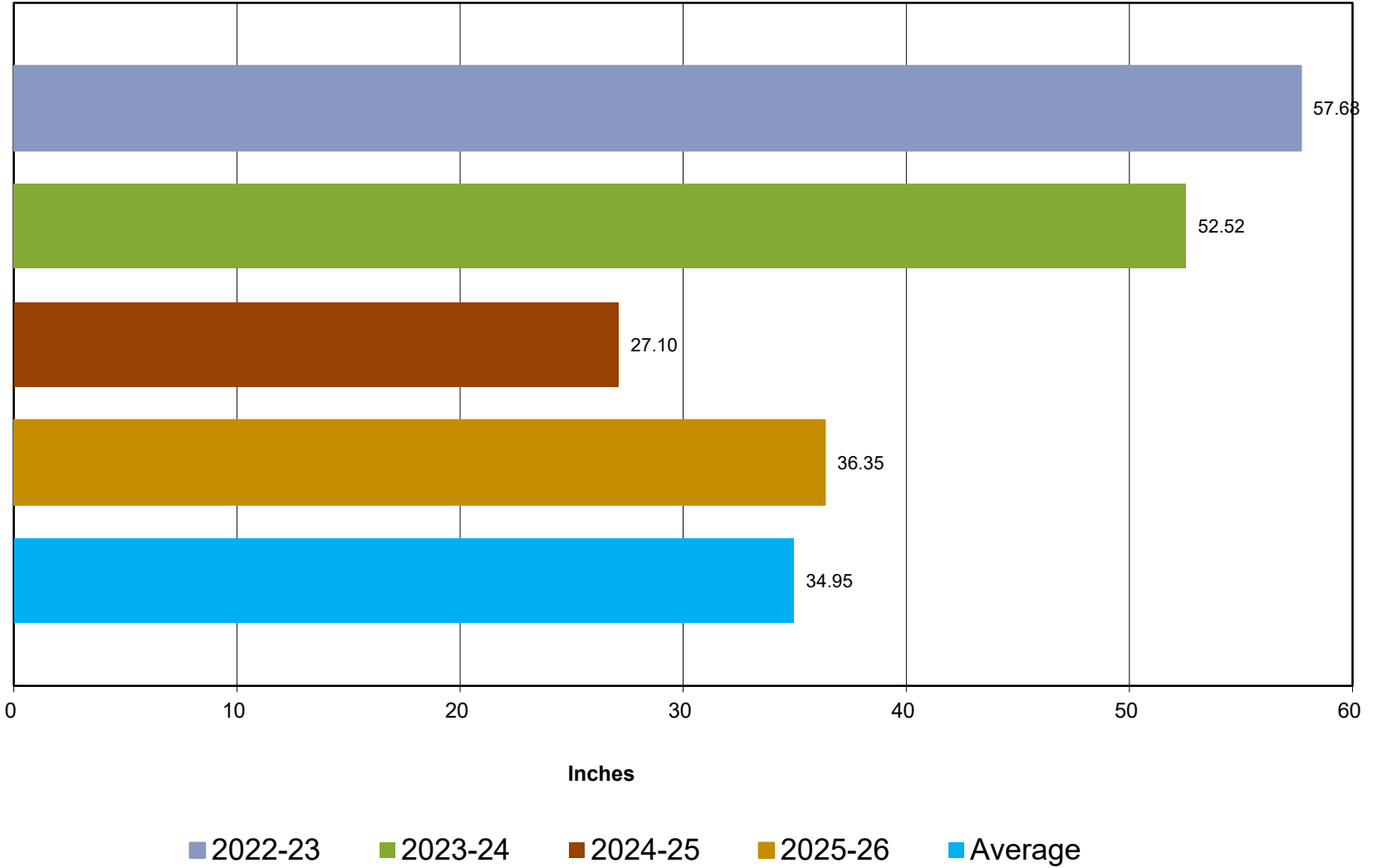
Purchased Water by Month Comparison



Total Production by Month Comparison



Total Rainfall Jul 1- Jun 30



Rainfall by Month

